

Report for pwp

Time range: 8/1/2010 00:00:30 - 8/31/2010 22:53:42

Generated on Wed Sep 01, 2010 - 11:12:37

General Statistics

Summary

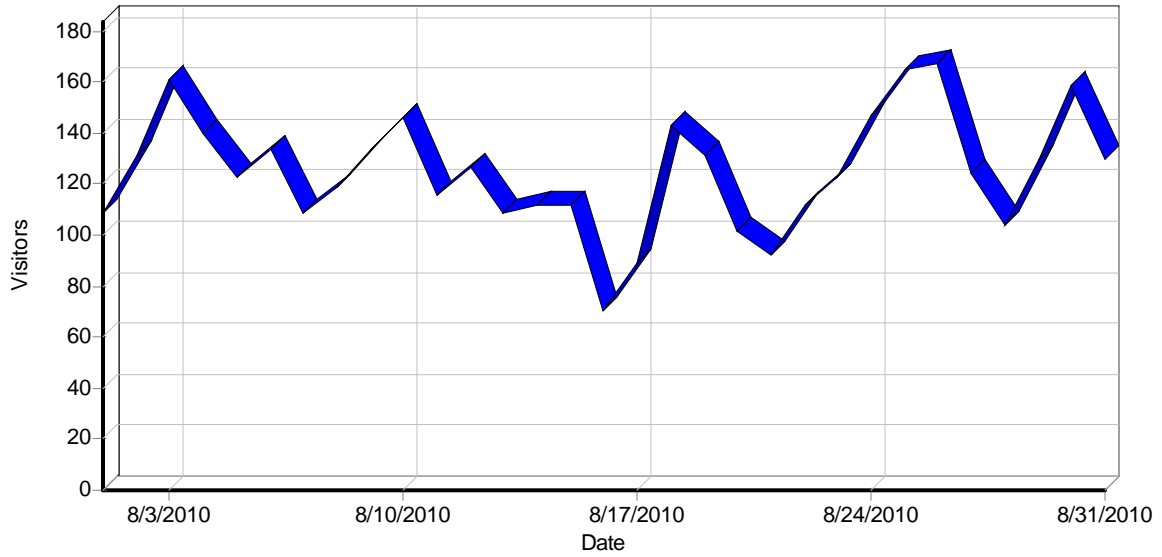
Summary

Hits	
Total Hits	21,593
Visitor Hits	21,593
Spider Hits	0
Average Hits per Day	696
Average Hits per Visitor	5.58
Cached Requests	311
Failed Requests	1,688
Page Views	
Total Page Views	5,614
Average Page Views per Day	181
Average Page Views per Visitor	1.45
Visitors	
Total Visitors	3,870
Average Visitors per Day	124
Total Unique IPs	3,255
Bandwidth	
Total Bandwidth	6.61 GB
Visitor Bandwidth	6.61 GB
Spider Bandwidth	0 B
Average Bandwidth per Day	218.25 MB
Average Bandwidth per Hit	320.85 KB
Average Bandwidth per Visitor	1.75 MB

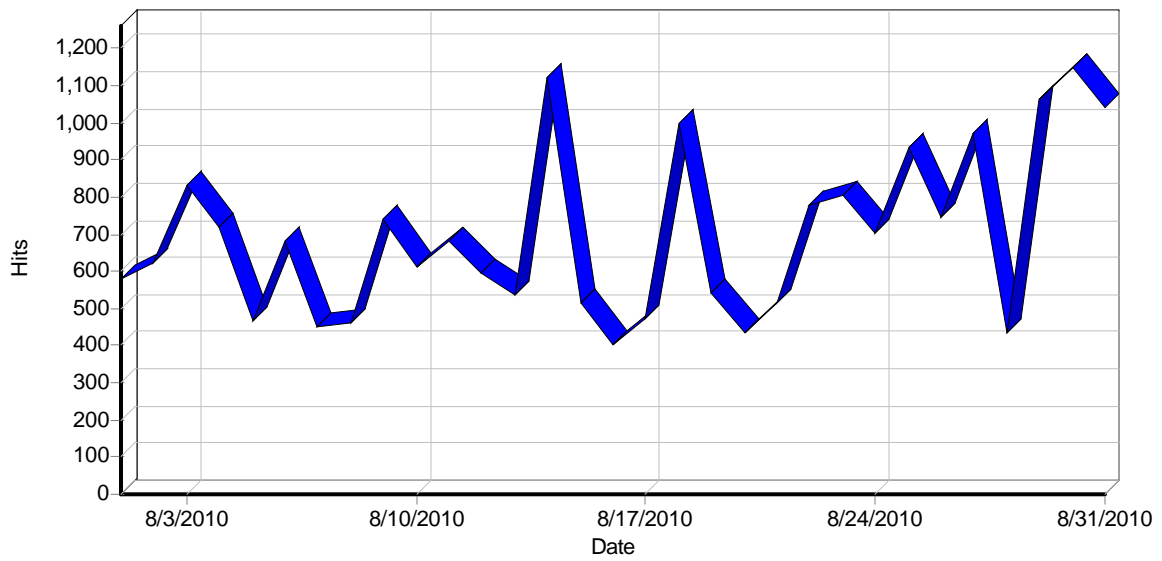
Activity Statistics

Daily

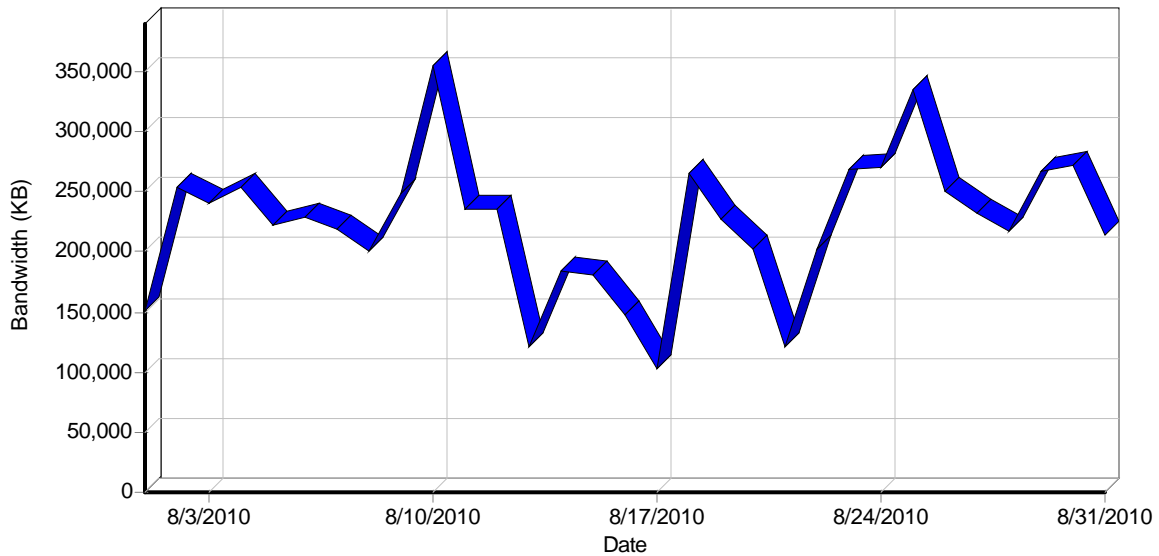
Daily Visitors



Daily Hits



Daily Bandwidth



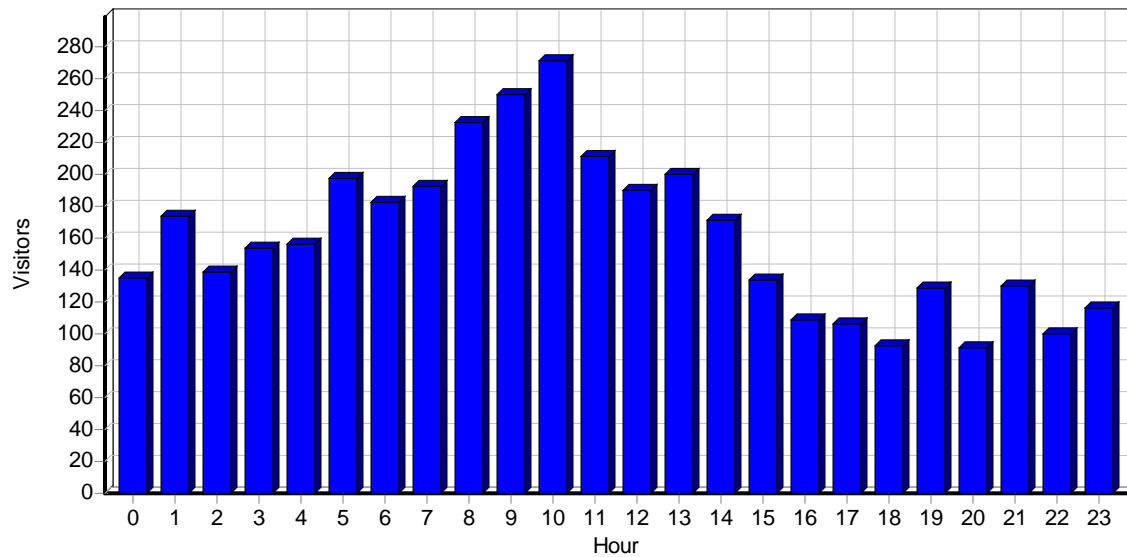
Daily Activity

Date	Hits	Page Views	Visitors	Average Visit Length	Bandwidth (KB)
Sun 8/1/2010	577	164	109	01:32	150,307
Mon 8/2/2010	623	122	131	01:17	253,821
Tue 8/3/2010	831	152	161	01:09	240,417
Wed 8/4/2010	719	166	140	00:37	253,973
Thu 8/5/2010	466	139	123	00:36	222,270
Fri 8/6/2010	681	131	134	01:31	228,890
Sat 8/7/2010	450	110	109	01:41	219,095
Sun 8/8/2010	461	81	119	01:08	201,315
Mon 8/9/2010	739	182	134	01:08	248,424
Tue 8/10/2010	611	112	146	01:03	354,388
Wed 8/11/2010	679	205	116	01:40	236,008
Thu 8/12/2010	594	91	127	00:38	236,076
Fri 8/13/2010	539	71	109	01:28	121,040
Sat 8/14/2010	1,123	637	112	00:40	184,247
Sun 8/15/2010	513	97	112	00:48	181,343
Mon 8/16/2010	404	104	70	01:24	147,868
Tue 8/17/2010	470	84	89	01:01	103,166
Wed 8/18/2010	1,000	154	143	01:06	264,844
Thu 8/19/2010	543	96	131	00:40	226,433
Fri 8/20/2010	433	94	102	01:28	202,943
Sat 8/21/2010	516	202	92	02:29	121,539
Sun 8/22/2010	778	278	112	02:47	203,097
Mon 8/23/2010	806	144	123	01:00	269,488
Tue 8/24/2010	704	161	147	01:49	270,319
Wed 8/25/2010	931	198	165	01:20	335,400
Thu 8/26/2010	745	285	167	03:32	249,774
Fri 8/27/2010	971	293	124	00:52	231,596
Sat 8/28/2010	437	125	104	01:29	216,912
Sun 8/29/2010	1,064	204	130	01:34	266,379
Mon 8/30/2010	1,146	150	159	01:17	272,178
Tue 8/31/2010	1,039	582	130	01:18	214,532

Total	21,593	5,614	3,870	01:22	6,928,097
--------------	---------------	--------------	--------------	--------------	------------------

By Hour of Day

Activity by Hour of Day

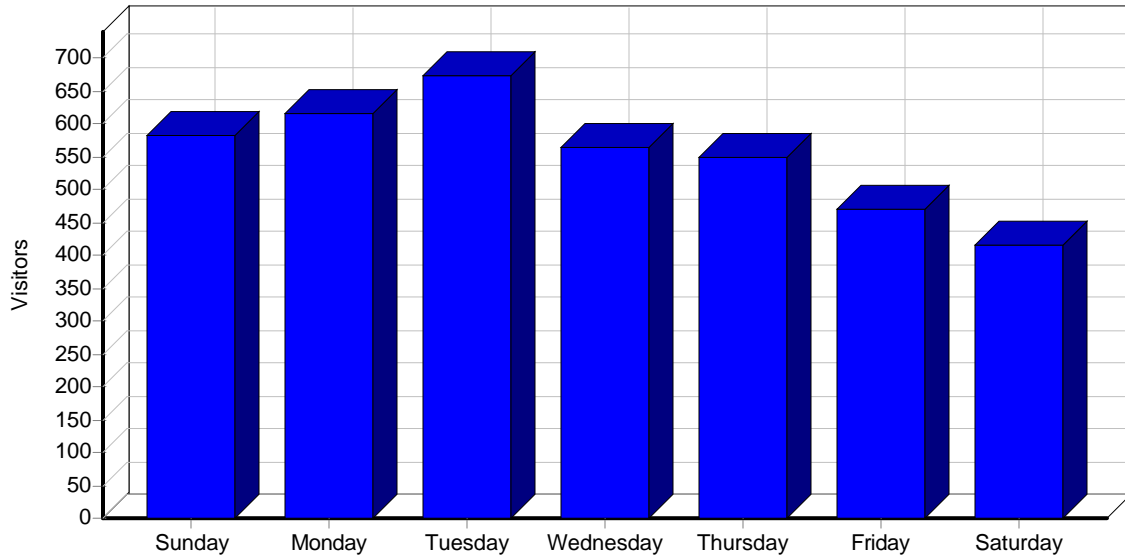


Activity by Hour of Day

Hour	Hits	Page Views	Visitors	Bandwidth (KB)
00:00 - 00:59	666	129	135	325,661
01:00 - 01:59	852	197	174	419,633
02:00 - 02:59	611	128	139	292,664
03:00 - 03:59	1,061	628	154	413,338
04:00 - 04:59	656	175	156	393,549
05:00 - 05:59	845	134	198	469,029
06:00 - 06:59	743	116	183	445,414
07:00 - 07:59	924	249	193	499,531
08:00 - 08:59	938	193	233	487,051
09:00 - 09:59	1,538	311	250	559,303
10:00 - 10:59	1,217	205	272	571,780
11:00 - 11:59	1,385	305	211	387,794
12:00 - 12:59	1,204	318	190	280,283
13:00 - 13:59	1,023	227	200	194,789
14:00 - 14:59	1,009	213	171	176,478
15:00 - 15:59	864	218	134	62,504
16:00 - 16:59	542	149	109	51,868
17:00 - 17:59	673	159	107	48,658
18:00 - 18:59	392	122	93	59,021
19:00 - 19:59	872	387	129	120,114
20:00 - 20:59	676	141	92	87,947
21:00 - 21:59	1,193	195	130	198,538
22:00 - 22:59	709	125	100	156,247
23:00 - 23:59	1,000	590	117	226,892
Total	21,593	5,614	3,870	6,928,097

By Day of Week

Activity by Day of Week

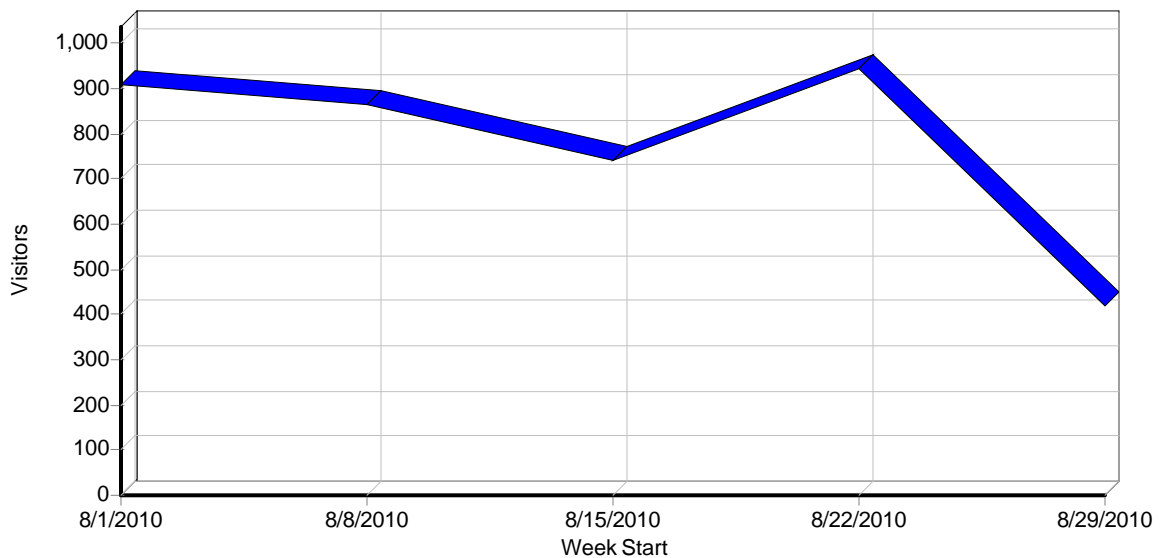


Activity by Day of Week

Day	Hits	Page Views	Visitors	Bandwidth (KB)
Sunday	3,393	824	582	1,002,442
Monday	3,718	702	617	1,191,782
Tuesday	3,655	1,091	673	1,182,825
Wednesday	3,329	723	564	1,090,226
Thursday	2,348	611	548	934,554
Friday	2,624	589	469	784,470
Saturday	2,526	1,074	417	741,795
Total	21,593	5,614	3,870	6,928,097

By Week

Activity by Week

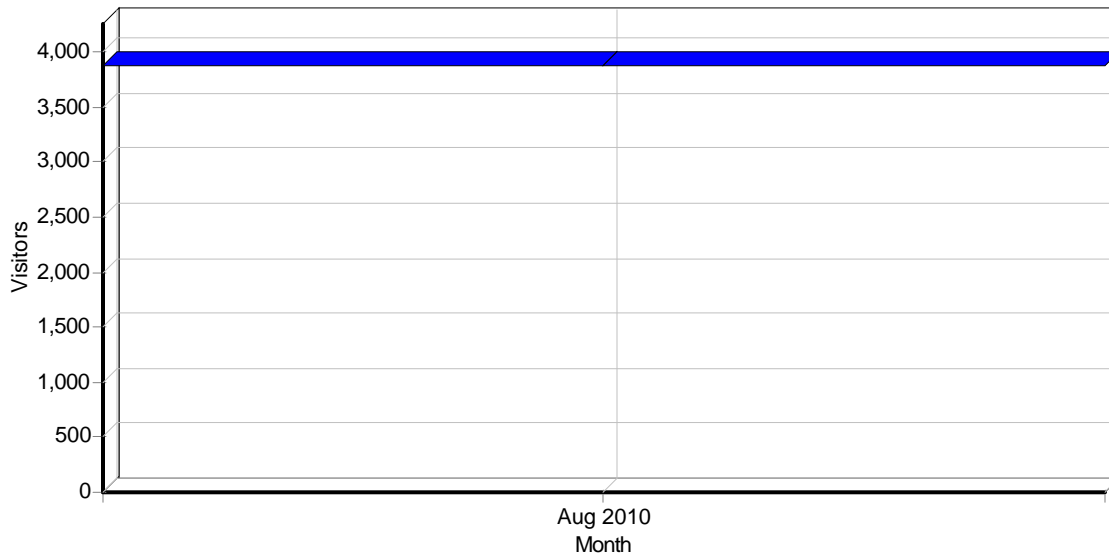


Activity by Week

Week	Hits	Page Views	Visitors	Bandwidth (KB)
8/1/2010 - 8/7/2010	4,347	984	907	1,568,775
8/8/2010 - 8/14/2010	4,746	1,379	863	1,581,501
8/15/2010 - 8/21/2010	3,879	831	739	1,248,141
8/22/2010 - 8/28/2010	5,372	1,484	942	1,776,588
8/29/2010 - 9/4/2010	3,249	936	419	753,090
Total	21,593	5,614	3,870	6,928,097

By Month

Activity by Month



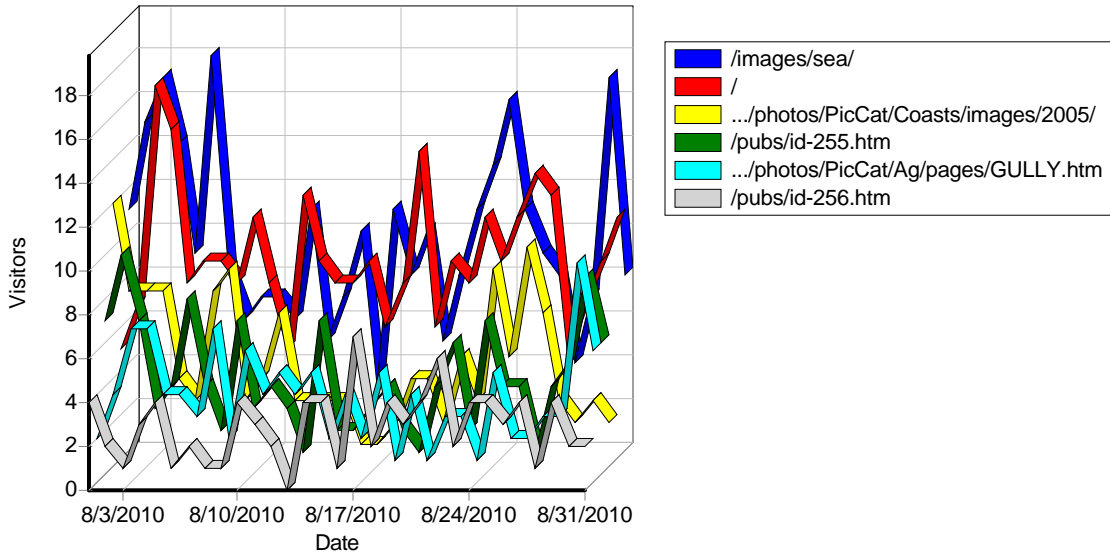
Activity by Month

Month	Hits	Page Views	Visitors	Bandwidth (KB)
Aug 2010	21,593	5,614	3,870	6,928,097
Total	21,593	5,614	3,870	6,928,097

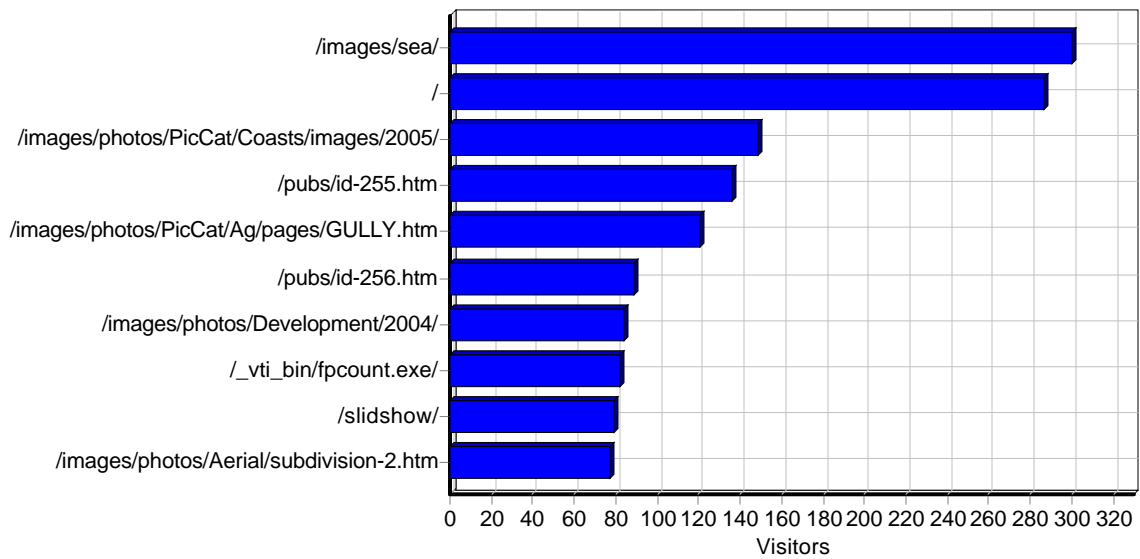
Access Statistics

Pages

Daily Page Access



Most Popular Pages



Most Popular Pages

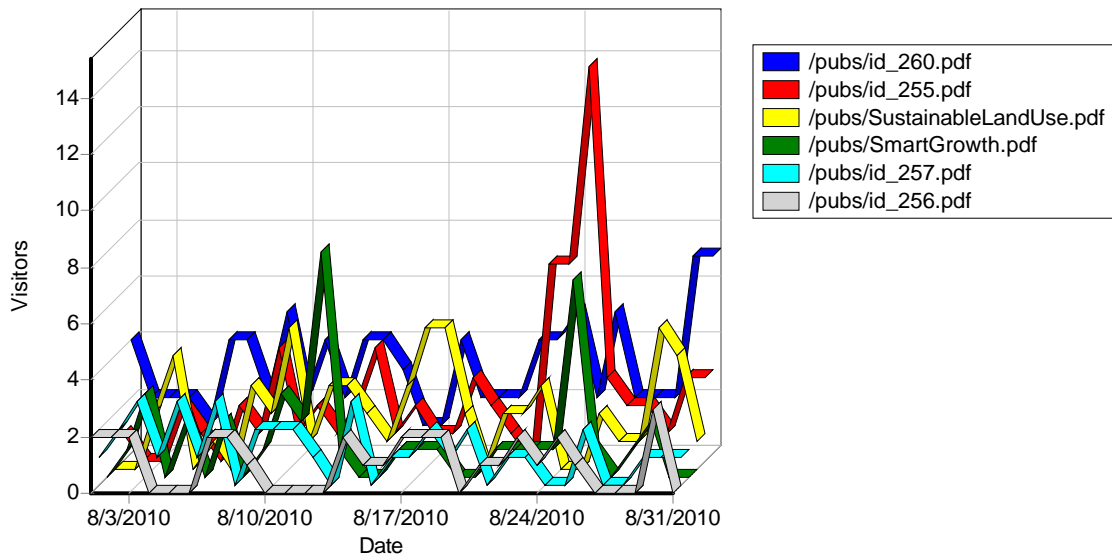
	Page	Hits	Incomplete Requests	Visitors	Bandwidth (KB)
1	http://www.planningwithpower.org/images/sea/	312	0	300	958
2	http://www.planningwithpower.org/	382	3	287	3,335
3	http://www.planningwithpower.org/images/photos/PicCat/Coasts/images/2005/	195	0	149	3,030
4	http://www.planningwithpower.org/pubs/id-255.htm	149	2	136	2,540
5	http://www.planningwithpower.org/images/photos/PicCat/Ag/pages/GULLY.htm	129	0	121	562
6	http://www.planningwithpower.org/pubs/id-256.htm	97	1	89	1,757
7	http://www.planningwithpower.org/images/photos/Development/2004/	125	1	84	24,330
8	http://www.planningwithpower.org/_vti_bin/fpcount.exe/	89	0	82	74
9	http://www.planningwithpower.org/slideshow/	81	0	79	19

10	http://www.planningwithpower.org/images/photos/Aerial/subdivision-2.htm	90	0	77	59
11	http://www.planningwithpower.org/images/photos/PicCat/Coasts/pages/2005/	123	2	75	573
12	http://www.planningwithpower.org/calend.htm	71	1	66	10,479
13	http://www.planningwithpower.org/about.htm	72	2	63	198
14	http://www.planningwithpower.org/images/photos/Otherphotos/ILStateBeach.htm	62	0	60	45
15	http://www.planningwithpower.org/ongoing.htm	76	7	59	1,281
16	http://www.planningwithpower.org/images/photos/Development/2004HIDev-4.html	61	0	59	43
17	http://www.planningwithpower.org/pubs.htm	69	1	58	341
18	http://www.planningwithpower.org/images/photos/Otherphotos/Porter0147.htm	56	0	55	34
19	http://www.planningwithpower.org/pubs/id-257.htm	59	0	55	996
20	http://www.planningwithpower.org/pubs/id-259.htm	53	0	49	1,348
21	http://www.planningwithpower.org/pubs/id-258.htm	52	0	49	836
22	http://www.planningwithpower.org/innews.html	50	1	48	103
23	http://www.planningwithpower.org/images/photos/Development/coastdev.htm	45	0	43	204
24	http://www.planningwithpower.org/links.htm	50	1	41	352
25	http://www.planningwithpower.org/images/photos.htm	52	1	41	228
26	http://www.planningwithpower.org/images/photos/Development/CTriver.html	40	0	39	25
27	http://www.planningwithpower.org/images/photos/development/2004/	47	0	38	7,103
28	http://www.planningwithpower.org/images/photos/Aerial/fragmentation.htm	36	0	34	26
29	http://www.planningwithpower.org/images/photos/Aerial/Meijer.htm	34	0	32	32
30	http://www.planningwithpower.org/images/photos/Aerial/aerial.htm	32	0	30	178
31	http://www.planningwithpower.org/images/photos/Toursmtg/Porter0176.htm	29	0	28	21
32	http://www.planningwithpower.org/images/photos/Aerial/Meijer&FaithBaptist.htm	28	0	27	28
33	http://www.planningwithpower.org/images/photos/Otherphotos/other.htm	25	0	25	178
34	http://www.planningwithpower.org/images/photos/PikeCounty/	24	0	22	24
35	http://www.planningwithpower.org/images/photos/Development/smrtgrth.htm	24	0	22	282
36	http://www.planningwithpower.org/images/photos/Aerial/reservoir-3.htm	23	0	22	17
37	http://www.planningwithpower.org/images/photos/Aerial/Meijer&/	21	0	21	1,966
38	http://www.planningwithpower.org/images/photos/Otherphotos/McCormicks.htm	22	0	21	16
39	http://www.planningwithpower.org/images/photos/Development/HI/	25	3	21	3,877
40	http://www.planningwithpower.org/webtrend/DEFAULT_01_b.HTM	21	0	21	412
41	http://www.planningwithpower.org/webtrend/DEFAULT_t.HTM	21	0	21	441
42	http://www.planningwithpower.org/images/photos/TryonFarms2008/	23	0	21	23
43	http://www.planningwithpower.org/images/photos/Toursmtg/toursmtg.htm	21	0	21	320
44	http://www.planningwithpower.org/images/photos/Development/2004HIDev-3.html	22	0	21	14
45	http://www.planningwithpower.org/images/photos/PicCat/CT/pages/RiverDredge.htm	22	1	20	88
46	http://www.planningwithpower.org/images/photos/Wateruses/wateruse.htm	22	0	20	96
47	http://www.planningwithpower.org/slideshow/web.htm	26	0	19	69
48	http://www.planningwithpower.org/webtrend/DEFAULT.HTM	18	0	18	25
49	http://www.planningwithpower.org/images/photos/Development/P0001995-Wabash/	18	0	17	42
50	http://www.planningwithpower.org/images/photos/Smart/2004Prairie66.htm	17	0	17	12
	Subtotal	3,241	27	N/A	69,064

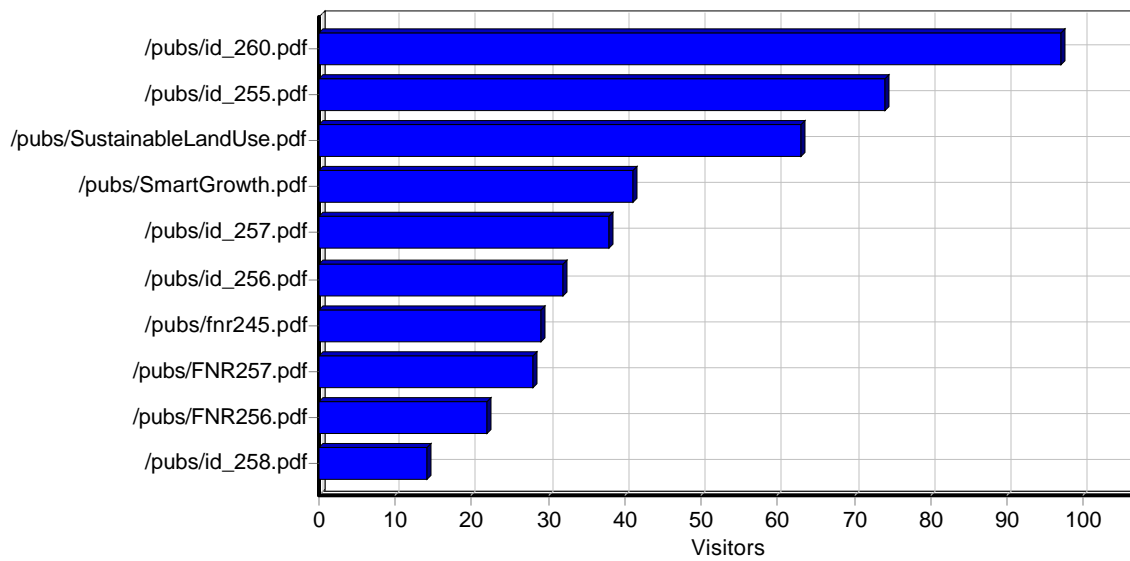
Total	5,450	27	N/A	77,371
-------	-------	----	-----	--------

Files

Daily File Access



Most Downloaded Files



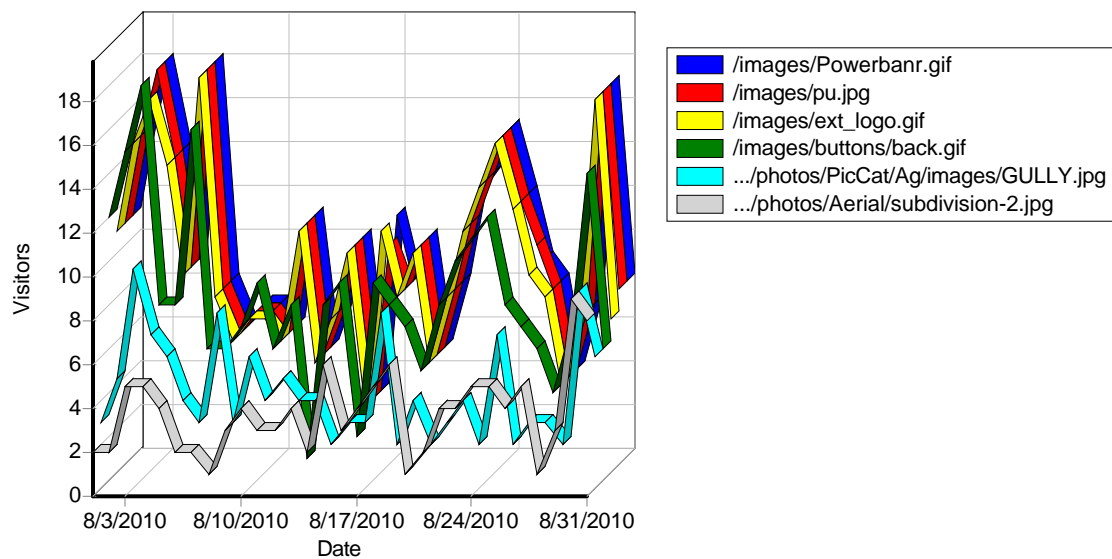
Most Downloaded Files

	File	Hits	Incomplete Requests	Visitors	Bandwidth (KB)
1	http://www.planningwithpower.org/pubs/id_260.pdf	618	517	97	86,147
2	http://www.planningwithpower.org/pubs/id_255.pdf	272	182	74	25,863
3	http://www.planningwithpower.org/pubs/SustainableLandUse.pdf	321	256	63	21,247
4	http://www.planningwithpower.org/pubs/SmartGrowth.pdf	197	153	41	16,904
5	http://www.planningwithpower.org/pubs/id_257.pdf	160	123	38	20,579
6	http://www.planningwithpower.org/pubs/id_256.pdf	76	43	32	8,206
7	http://www.planningwithpower.org/pubs/fnr245.pdf	177	148	29	10,281
8	http://www.planningwithpower.org/pubs/FNR257.pdf	124	92	28	8,563
9	http://www.planningwithpower.org/pubs/FNR256.pdf	94	69	22	5,201

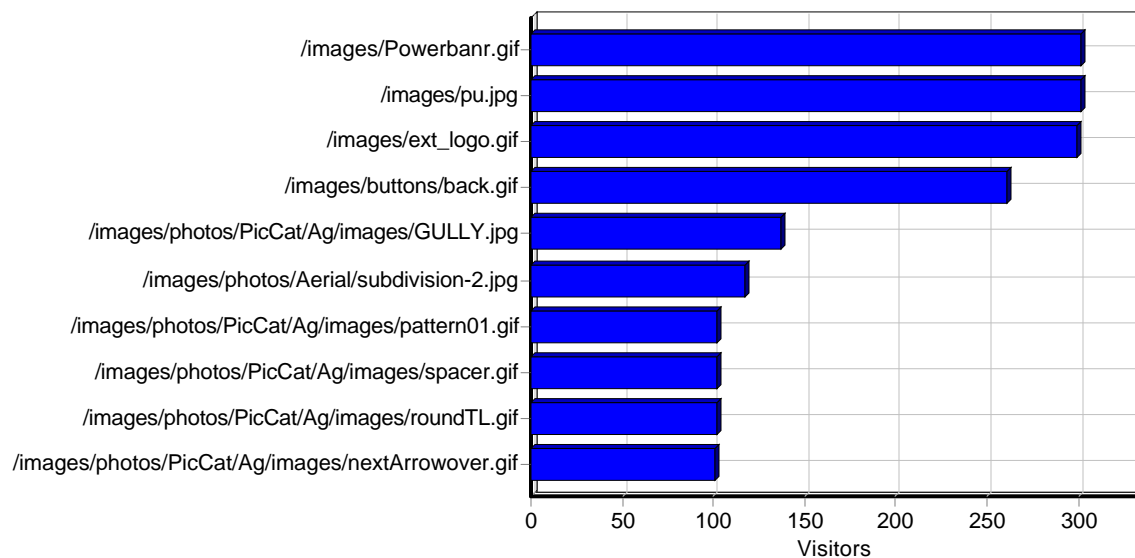
10	http://www.planningwithpower.org/pubs/id_258.pdf	65	51	14	3,369
11	http://www.planningwithpower.org/pubs/id_259.pdf	48	35	13	8,171
12	http://www.planningwithpower.org/webtrend/pwp.pdf	13	0	13	1,853
13	http://www.planningwithpower.org/_vti_bin/_vti_aut/author.dll	15	0	11	15
14	http://www.planningwithpower.org/pubs/FNR255.pdf	30	21	9	1,460
15	http://www.planningwithpower.org/bobvalpo.pdf	2	0	2	15
16	http://www.planningwithpower.org/pubs/fnr257.pdf	2	0	2	64
17	http://www.planningwithpower.org/dm/pdf/Chapter1433HillsideOverlayDistricts.pdf	1	0	1	94
18	http://www.planningwithpower.org/pubs/fnr255.pdf	1	0	1	64
19	http://www.planningwithpower.org/pubs/fnr256.pdf	1	0	1	64
	Total	2,217	1,690	N/A	218,168

Images

Daily Image Access



Most Requested Images



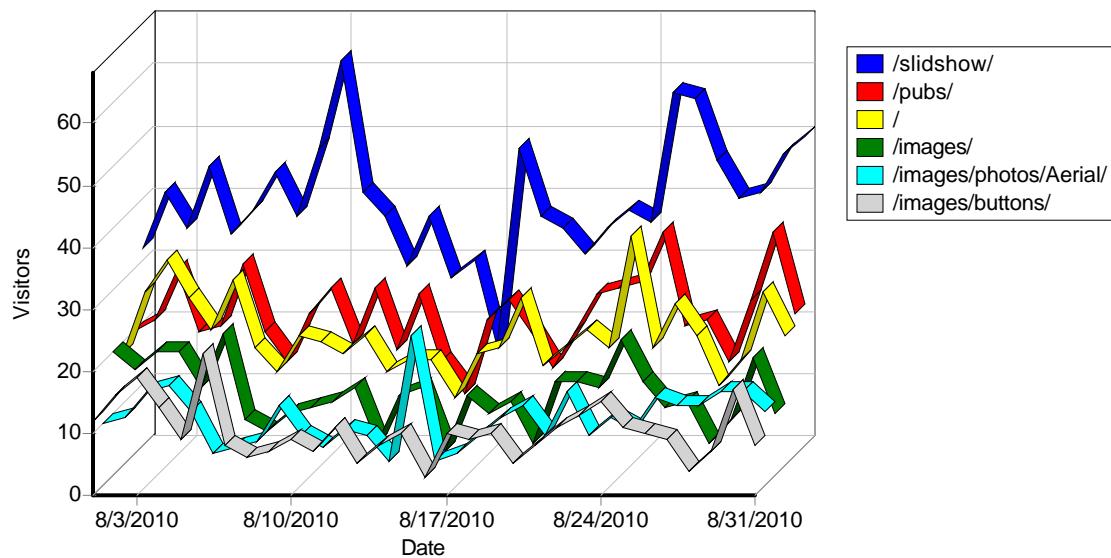
Most Requested Images

	Image	Hits	Incomplete Requests	Visitors	Bandwidth (KB)
1	http://www.planningwithpower.org/images/Powerbanr.gif	315	1	302	3,738
2	http://www.planningwithpower.org/images/pu.jpg	314	0	301	1,858
3	http://www.planningwithpower.org/images/ext_logo.gif	310	0	299	991
4	http://www.planningwithpower.org/images/buttons/back.gif	271	0	261	601
5	http://www.planningwithpower.org/images/photos/PicCat/Ag/images/GULLY.jpg	159	2	137	5,163
6	http://www.planningwithpower.org/images/photos/Aerial/subdivision-2.jpg	140	3	117	6,884
7	http://www.planningwithpower.org/images/photos/PicCat/Ag/images/pattern01.gif	102	0	102	37
8	http://www.planningwithpower.org/images/photos/PicCat/Ag/images/spacer.gif	102	0	102	31
9	http://www.planningwithpower.org/images/photos/PicCat/Ag/images/roundTL.gif	103	0	102	34
10	http://www.planningwithpower.org/images/photos/PicCat/Ag/images/nextArrowover.gif	101	0	101	75
11	http://www.planningwithpower.org/images/photos/PicCat/Ag/images/innerTL.gif	102	0	101	32
12	http://www.planningwithpower.org/images/photos/PicCat/Ag/images/innerBL.gif	101	0	101	32
13	http://www.planningwithpower.org/images/photos/PicCat/Ag/images/roundTR.gif	102	0	101	34
14	http://www.planningwithpower.org/images/photos/PicCat/Ag/images/roundBL.gif	101	0	101	33
15	http://www.planningwithpower.org/images/photos/PicCat/Ag/images/previousArrowover.gif	101	0	101	73
16	http://www.planningwithpower.org/images/photos/PicCat/Ag/images/roundBR.gif	102	0	100	34
17	http://www.planningwithpower.org/images/photos/PicCat/Ag/images/nextArrow.gif	101	0	100	75
18	http://www.planningwithpower.org/images/photos/PicCat/Ag/images/previousArrow.gif	101	0	99	73
19	http://www.planningwithpower.org/images/photos/Aerial/fragmentation.jpg	123	8	91	20,500
20	http://www.planningwithpower.org/images/LDM_button.gif	76	0	72	1,203
21	http://www.planningwithpower.org/images/buttons/tech.gif	77	0	72	153
22	http://www.planningwithpower.org/images/loop.gif	76	0	72	6,777
23	http://www.planningwithpower.org/images/NEMOV2.jpg	76	0	72	9,050
24	http://www.planningwithpower.org/images/buttons/photos.gif	75	0	71	139
25	http://www.planningwithpower.org/images/buttons/pubs.gif	76	0	71	126
26	http://www.planningwithpower.org/images/buttons/about.gif	76	0	71	123
27	http://www.planningwithpower.org/images/buttons/efforts.gif	75	0	71	139
28	http://www.planningwithpower.org/images/NOAA-1.gif	75	0	71	208
29	http://www.planningwithpower.org/images/buttons/activ.gif	74	0	70	125
30	http://www.planningwithpower.org/images/photos/PicCat/Coasts/images/pattern01.gif	65	0	62	23
31	http://www.planningwithpower.org/images/photos/PicCat/Coasts/images/spacer.gif	65	0	62	20
32	http://www.planningwithpower.org/images/photos/PicCat/Coasts/images/innerBL.gif	64	0	62	20
33	http://www.planningwithpower.org/images/photos/PicCat/Coasts/images/roundTL.gif	65	0	62	22
34	http://www.planningwithpower.org/images/photos/PicCat/Coasts/images/innerTL.gif	65	0	62	20
35	http://www.planningwithpower.org/images/photos/PicCat/Coasts/images/roundTR.gif	64	0	62	21
36	http://www.planningwithpower.org/images/photos/PicCat/Coasts/images/roundBL.gif	64	0	62	21
37	http://www.planningwithpower.org/images/photos/Otherphotos/ILstatebeach.jpg	69	1	61	3,379

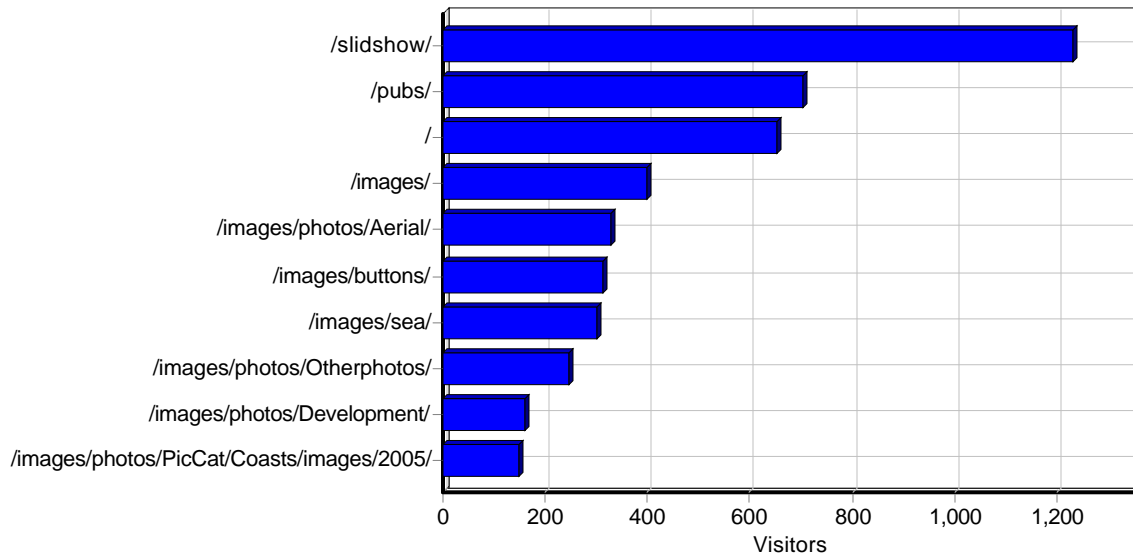
38	http://www.planningwithpower.org/images/photos/PicCat/Coasts/images/roundBR.gif	64	0	61	21
39	http://www.planningwithpower.org/images/photos/PicCat/Coasts/images/nextArrow.gif	61	0	60	46
40	http://www.planningwithpower.org/images/photos/PicCat/Coasts/images/previousArrowover.gif	62	0	60	45
41	http://www.planningwithpower.org/images/photos/PicCat/Coasts/images/nextArrowover.gif	63	0	60	46
42	http://www.planningwithpower.org/images/photos/PicCat/Coasts/images/previousArrow.gif	62	0	60	44
43	http://www.planningwithpower.org/images/photos/Otherphotos/Porter0147.jpg	58	0	55	5,928
44	http://www.planningwithpower.org/images/photos/Smart/DSC00359.JPG	60	2	54	77,424
45	http://www.planningwithpower.org/images/photos/Wateruses/currentpages/FortO.jpg	59	4	52	13,218
46	http://www.planningwithpower.org/images/photos/Otherphotos/Beachfront.jpg	58	4	51	2,602
47	http://www.planningwithpower.org/images/photos/PicCat/CT/images/GilletteCastle.jpg	68	7	45	771
48	http://www.planningwithpower.org/images/photos/Aerial/Meijer.jpg	48	2	42	9,635
49	http://www.planningwithpower.org/images/photos/Development/CTriver.jpg	53	4	41	6,762
50	http://www.planningwithpower.org/images/Powermgrn.jpg	43	0	40	2,560
	Subtotal	4,887	38	N/A	180,992
	Total	7,675	53	N/A	342,233

Directories

Daily Directory Access



Most Requested Directories



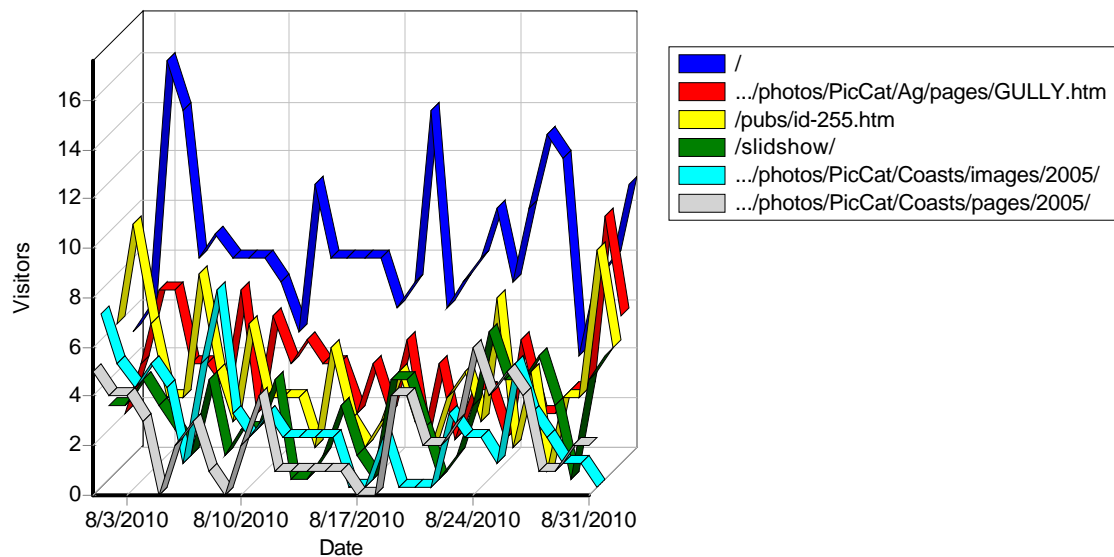
Most Requested Directories

	Directory	Hits	Incomplete Requests	Visitors	Bandwidth (KB)
1	http://www.planningwithpower.org/slideshow/	4,040	2,410	1,230	6,282,380
2	http://www.planningwithpower.org/pubs/	2,596	1,693	702	223,669
3	http://www.planningwithpower.org/	1,180	16	654	21,132
4	http://www.planningwithpower.org/images/	1,652	2	400	32,456
5	http://www.planningwithpower.org/images/photos/Aerial/	901	14	328	56,844
6	http://www.planningwithpower.org/images/buttons/	850	0	314	1,557
7	http://www.planningwithpower.org/images/sea/	312	0	300	958
8	http://www.planningwithpower.org/images/photos/Otherphotos/	492	5	245	18,268
9	http://www.planningwithpower.org/images/photos/Development/	456	12	161	30,033
10	http://www.planningwithpower.org/images/photos/PicCat/Coasts/images/2005/	195	0	149	3,030
11	http://www.planningwithpower.org/images/photos/PicCat/Ag/images/	1,507	2	147	6,439
12	http://www.planningwithpower.org/images/photos/PicCat/Ag/pages/	163	0	125	732
13	http://www.planningwithpower.org/images/photos/Smart/	368	6	107	155,976
14	http://www.planningwithpower.org/images/photos/PicCat/CT/images/	652	7	91	4,049
15	http://www.planningwithpower.org/images/photos/Development/2004/	125	1	84	24,330
16	http://www.planningwithpower.org/_vti_bin/fpcount.exe/	89	0	82	74
17	http://www.planningwithpower.org/images/photos/Toursmtg/	473	1	77	11,040
18	http://www.planningwithpower.org/images/photos/PicCat/Coasts/pages/2005/	123	2	75	573
19	http://www.planningwithpower.org/images/photos/PicCat/Coasts/images/	829	0	63	424
20	http://www.planningwithpower.org/images/photos/Wateruses/currentpages/	75	4	59	13,943
21	http://www.planningwithpower.org/images/photos/PicCat/CT/pages/	268	1	50	1,344
22	http://www.planningwithpower.org/webtrend/	227	0	49	3,981
23	http://www.planningwithpower.org/images/photos/development/2004/	47	0	38	7,103
24	http://www.planningwithpower.org/images/photos/PikeCounty/	32	0	24	64
25	http://www.planningwithpower.org/images/photos/Wateruses/	41	0	24	114
26	http://www.planningwithpower.org/images/photos/TryonFarms2008/	28	0	21	36
27	http://www.planningwithpower.org/images/photos/Development/HI/	25	3	21	3,877
28	http://www.planningwithpower.org/images/photos/Aerial/Meijer&/	21	0	21	1,966
29	http://www.planningwithpower.org/images/photos/PicCat/Commerical/thumbnails/	475	0	18	796

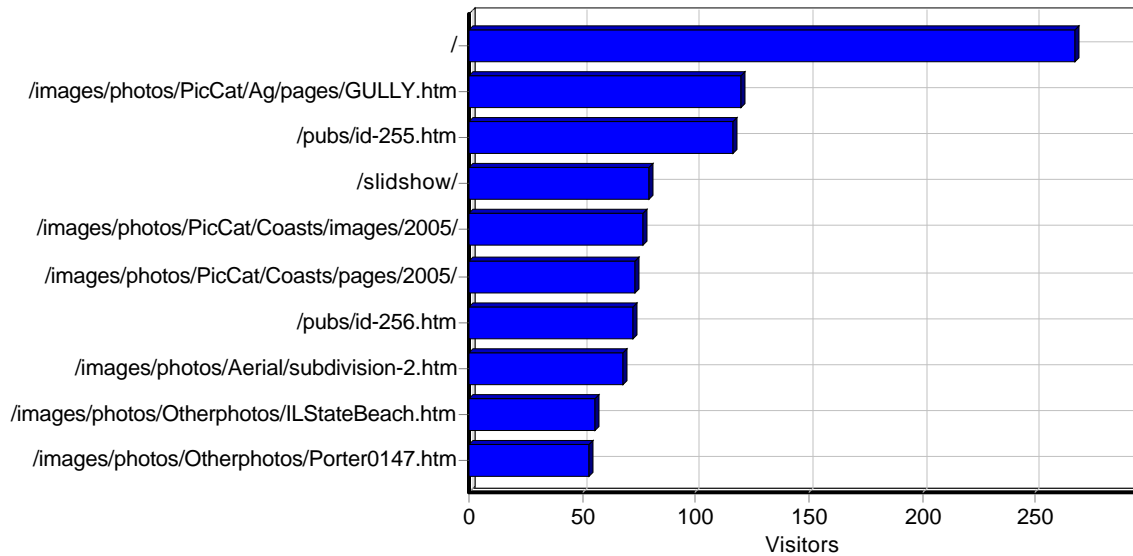
30	http://www.planningwithpower.org/images/photos/Development/P0001995-Wabash/	18	0	17	42
31	http://www.planningwithpower.org/images/photos/Development/P0001996-Wabash/	17	0	17	38
32	http://www.planningwithpower.org/images/photos/PicCat/Commerical/	29	0	17	166
33	http://www.planningwithpower.org/images/photos/PicCat/	16	0	16	74
34	http://www.planningwithpower.org/images/photos/development/	26	0	16	16
35	http://www.planningwithpower.org/images/photos/PicCat/Commerical/images/	177	0	14	633
36	http://www.planningwithpower.org/images/photos/PicCat/Commerical/pages/350S_18th/	21	0	13	105
37	http://www.planningwithpower.org/images/photos/PicCat/Commerical/thumbnails/350S_18th/	33	0	13	46
38	http://www.planningwithpower.org/images/photos/PicCat/Commerical/images/350S_18th/	16	0	12	155
39	http://www.planningwithpower.org/images/photos/PicCat/Commerical/thumbnails/Columbia/	22	0	12	45
40	http://www.planningwithpower.org/_vti_bin/_vti_aut/	15	0	11	15
41	http://www.planningwithpower.org/DM/phase1/	12	0	11	254
42	http://www.planningwithpower.org/images/photos/PicCat/Commerical/thumbnails/9th/	11	0	11	17
43	http://www.planningwithpower.org/DM/	18	0	10	97
44	http://www.planningwithpower.org/images/photos/PicCat/Commerical/thumbnails/gravel/	10	0	10	13
45	http://www.planningwithpower.org/slideshow/web_files/	141	0	10	6,364
46	http://www.planningwithpower.org/images/photos/PicCat/Commerical/thumbnails/Old/	20	0	10	34
47	http://www.planningwithpower.org/images/photos/PicCat/Commerical/thumbnails/cars/	10	0	10	17
48	http://www.planningwithpower.org/images/photos/PicCat/Commerical/thumbnails/crane/	10	0	10	20
49	http://www.planningwithpower.org/images/photos/PicCat/Commerical/thumbnails/reilhe/	10	0	10	17
50	http://www.planningwithpower.org/images/photos/PicCat/Commerical/thumbnails/street/	10	0	10	17
Subtotal		18,884	4,179	N/A	6,915,394
Total		19,905	4,180	N/A	6,925,264

Entry Pages

Daily Entry Pages



Top Entry Pages



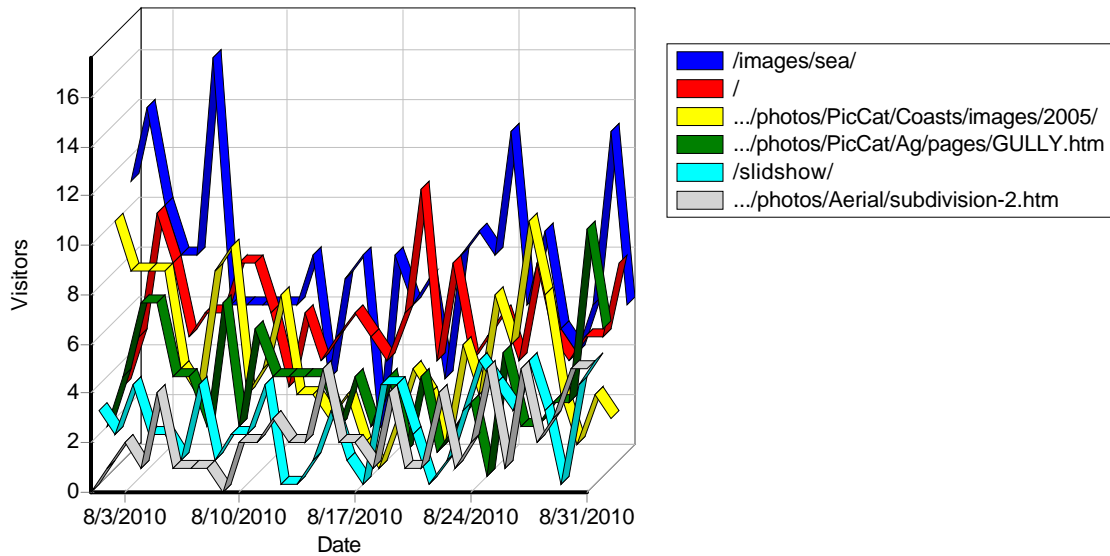
Top Entry Pages

	Page	Visitors
1	http://www.planningwithpower.org/	267
2	http://www.planningwithpower.org/images/photos/PicCat/Ag/pages/GULLY.htm	120
3	http://www.planningwithpower.org/pubs/id-255.htm	116
4	http://www.planningwithpower.org/slideshow/	79
5	http://www.planningwithpower.org/images/photos/PicCat/Coasts/images/2005/	77
6	http://www.planningwithpower.org/images/photos/PicCat/Coasts/pages/2005/	73
7	http://www.planningwithpower.org/pubs/id-256.htm	72
8	http://www.planningwithpower.org/images/photos/Aerial/subdivision-2.htm	68
9	http://www.planningwithpower.org/images/photos/Otherphotos/ILStateBeach.htm	56
10	http://www.planningwithpower.org/images/photos/Otherphotos/Porter0147.htm	53
11	http://www.planningwithpower.org/images/photos/Development/2004HIDev-4.html	50
12	http://www.planningwithpower.org/pubs/id-257.htm	39
13	http://www.planningwithpower.org/calend.htm	35
14	http://www.planningwithpower.org/pubs/id-258.htm	32
15	http://www.planningwithpower.org/images/photos/Development/CTriver.html	31
16	http://www.planningwithpower.org/pubs/id-259.htm	31
17	http://www.planningwithpower.org/images/photos/development/2004/	25
18	http://www.planningwithpower.org/images/photos/Toursmtg/Porter0176.htm	22
19	http://www.planningwithpower.org/ongoing.htm	22
20	http://www.planningwithpower.org/innews.html	22
21	http://www.planningwithpower.org/images/photos/Aerial/fragmentation.htm	22
22	http://www.planningwithpower.org/images/sea/	18
23	http://www.planningwithpower.org/images/photos/Aerial/Meijer.htm	18
24	http://www.planningwithpower.org/images/photos/PicCat/CT/pages/RiverDredge.htm	18
25	http://www.planningwithpower.org/images/photos/Development/coastdev.htm	18
26	http://www.planningwithpower.org/about.htm	17
27	http://www.planningwithpower.org/images/photos/Otherphotos/McCormicks.htm	16
28	http://www.planningwithpower.org/images/photos/Development/2004/	15
29	http://www.planningwithpower.org/webtrend/DEFAULT.HTM	15
30	http://www.planningwithpower.org/images/photos/development/2004hidev-4.html	13
31	http://www.planningwithpower.org/images/photos.htm	13

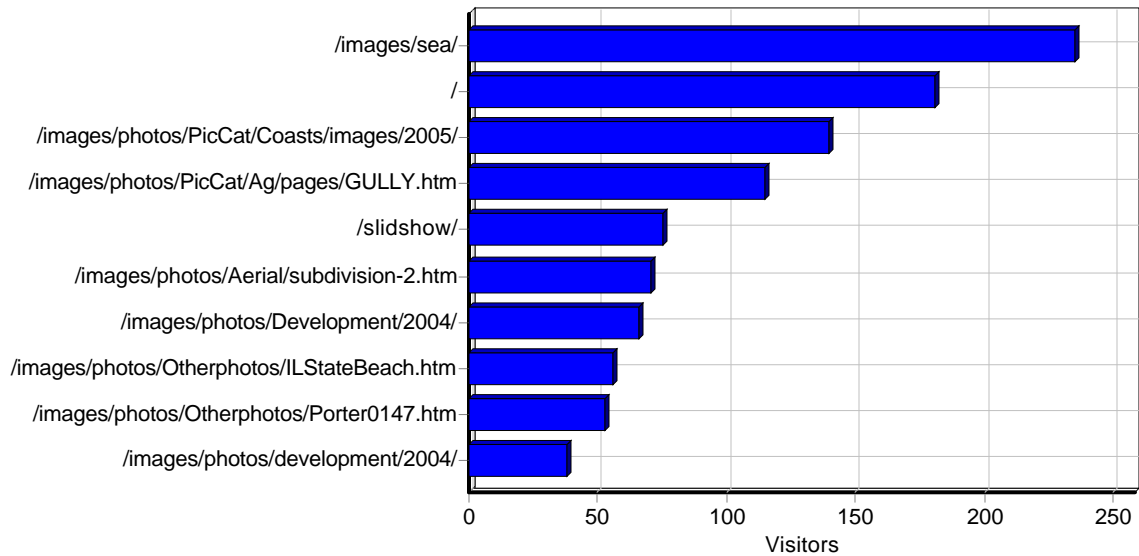
32	http://www.planningwithpower.org/images/photos/Smart/DSC00359.htm	12
33	http://www.planningwithpower.org/images/photos/Aerial/Meijer&FaithBaptist.htm	12
34	http://www.planningwithpower.org/images/photos/PicCat/Commerical/	12
35	http://www.planningwithpower.org/images/photos/Smart/2004Prairie66.htm	11
36	http://www.planningwithpower.org/images/photos/PicCat/CT/pages/GilletteCastle.htm	10
37	http://www.planningwithpower.org/images/photos/Aerial/reservoir-3.htm	10
38	http://www.planningwithpower.org/links.htm	9
39	http://www.planningwithpower.org/images/photos/PicCat/CT/pages/kudzo.htm	8
40	http://www.planningwithpower.org/images/photos/Development/2004HIDev-3.html	8
41	http://www.planningwithpower.org/webtrend/Default.htm	8
42	http://www.planningwithpower.org/images/photos/Otherphotos/OldBarn.htm	7
43	http://www.planningwithpower.org/_vti_bin/fpcount.exe/	6
44	http://www.planningwithpower.org/_vti_inf.html	6
45	http://www.planningwithpower.org/images/photos/Development/vol_dev.html	6
46	http://www.planningwithpower.org/images/photos/Otherphotos/other.htm	6
47	http://www.planningwithpower.org/images/photos/Smart/walkableCA-3.htm	5
48	http://www.planningwithpower.org/images/photos/Toursmtg/Kiwanis012.htm	5
49	http://www.planningwithpower.org/images/photos/aerial/meijer&faithbaptist.htm	5
50	http://www.planningwithpower.org/images/photos/Development/Goodspeed.html	5
	Subtotal	1,624
	Total	1,775

Exit Pages

Daily Exit Pages



Top Exit Pages



Top Exit Pages

	Page	Visitors
1	http://www.planningwithpower.org/images/sea/	235
2	http://www.planningwithpower.org/	181
3	http://www.planningwithpower.org/images/photos/PicCat/Coasts/images/2005/	140
4	http://www.planningwithpower.org/images/photos/PicCat/Ag/pages/GULLY.htm	115
5	http://www.planningwithpower.org/slidshow/	75
6	http://www.planningwithpower.org/images/photos/Aerial/subdivision-2.htm	71
7	http://www.planningwithpower.org/images/photos/Development/2004/	66
8	http://www.planningwithpower.org/images/photos/Otherphotos/ILStateBeach.htm	56
9	http://www.planningwithpower.org/images/photos/Otherphotos/Porter0147.htm	53
10	http://www.planningwithpower.org/images/photos/development/2004/	38
11	http://www.planningwithpower.org/_vti_bin/fpcount.exe/	36
12	http://www.planningwithpower.org/calend.htm	33
13	http://www.planningwithpower.org/images/photos/Development/CTriver.html	32
14	http://www.planningwithpower.org/about.htm	31
15	http://www.planningwithpower.org/ongoing.htm	26
16	http://www.planningwithpower.org/pubs/id-259.htm	25
17	http://www.planningwithpower.org/pubs.htm	22
18	http://www.planningwithpower.org/images/photos/Aerial/fragmentation.htm	21
19	http://www.planningwithpower.org/images/photos/Toursmtg/Porter0176.htm	20
20	http://www.planningwithpower.org/innews.html	17
21	http://www.planningwithpower.org/images/photos/Aerial/Meijer.htm	17
22	http://www.planningwithpower.org/pubs/id-255.htm	17
23	http://www.planningwithpower.org/pubs/id-256.htm	17
24	http://www.planningwithpower.org/webtrend/DEFAULT_01_b.HTM	16
25	http://www.planningwithpower.org/images/photos/Aerial/reservoir-3.htm	15
26	http://www.planningwithpower.org/images/photos/PicCat/CT/pages/RiverDredge.htm	15
27	http://www.planningwithpower.org/images/photos/Otherphotos/McCormicks.htm	15
28	http://www.planningwithpower.org/images/photos/Aerial/Meijer&FaithBaptist.htm	14
29	http://www.planningwithpower.org/images/photos.htm	13
30	http://www.planningwithpower.org/images/photos/Smart/DSC00359.htm	13
31	http://www.planningwithpower.org/images/photos/Smart/2004Prairie66.htm	11

32	http://www.planningwithpower.org/images/photos/PicCat/CT/pages/GilletteCastle.htm	10
33	http://www.planningwithpower.org/_vti_bin/shtml.dll/_vti_rpc/	10
34	http://www.planningwithpower.org/links.htm	10
35	http://www.planningwithpower.org/images/photos/PicCat/Coasts/pages/2005/	9
36	http://www.planningwithpower.org/pubs/id-257.htm	9
37	http://www.planningwithpower.org/images/photos/Development/coastdev.htm	8
38	http://www.planningwithpower.org/images/photos/Development/vol_dev.html	8
39	http://www.planningwithpower.org/images/photos/Development/HI/	7
40	http://www.planningwithpower.org/images/photos/PicCat/CT/pages/kudzo.htm	7
41	http://www.planningwithpower.org/pubs/id-258.htm	7
42	http://www.planningwithpower.org/images/photos/Otherphotos/OldBarn.htm	7
43	http://www.planningwithpower.org/images/photos/Development/smrtgrth.htm	6
44	http://www.planningwithpower.org/slideshow/web.htm	6
45	http://www.planningwithpower.org/images/photos/Development/Goodspeed.html	6
46	http://www.planningwithpower.org/images/photos/Aerial/Meijer&/	6
47	http://www.planningwithpower.org/images/photos/aerial/meijer&faithbaptist.htm	5
48	http://www.planningwithpower.org/images/photos/Development/2004HIDev-4.html	5
49	http://www.planningwithpower.org/images/photos/Aerial/aerial.htm	5
50	http://www.planningwithpower.org/images/photos/Smart/walkableCA-3.htm	5
	Subtotal	1,592
	Total	1,775

Paths

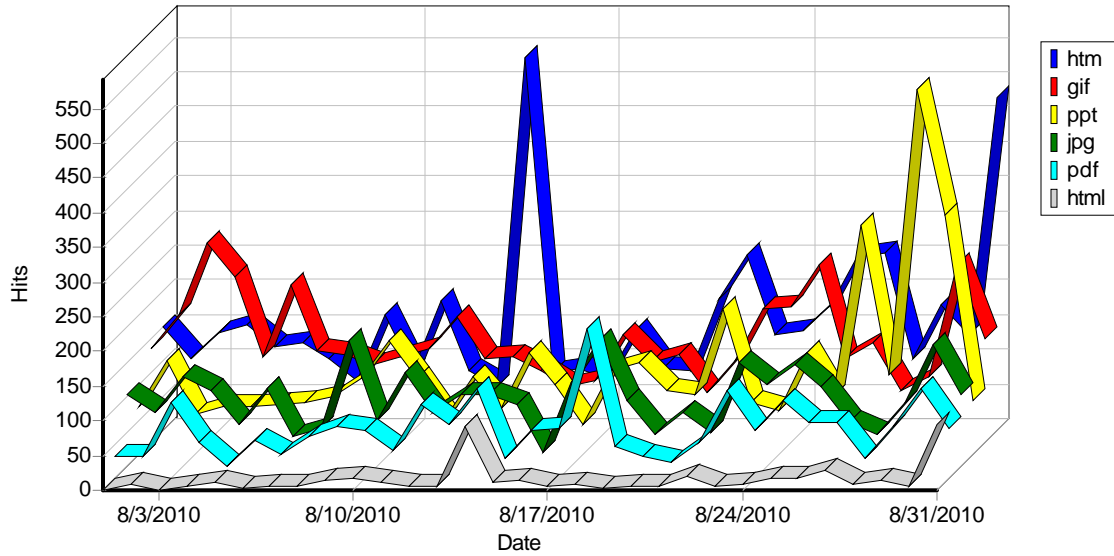
Top Paths Through Site

	Path	Visitors	% of Total Visitors
1	/	174	9.80%
2	/images/photos/PicCat/Ag/pages/GULLY.htm	115	6.48%
3	/pubs/id-255.htm -> /images/sea/	101	5.69%
4	/images/photos/PicCat/Coasts/images/2005/	77	4.34%
5	/slideshow/	75	4.23%
6	/images/photos/Aerial/subdivision-2.htm	68	3.83%
7	/images/photos/PicCat/Coasts/pages/2005/ -> /images/photos/PicCat/Coasts/images/2005/	57	3.21%
8	/images/photos/Otherphotos/ILStateBeach.htm	55	3.10%
9	/pubs/id-256.htm -> /images/sea/	53	2.99%
10	/images/photos/Otherphotos/Porter0147.htm	53	2.99%
11	/images/photos/Development/2004HIDev-4.html -> /images/photos/Development/2004/	43	2.42%
12	/images/photos/Development/CTriver.html	31	1.75%
13	/ -> /images/sea/ -> /_vti_bin/fpcount.exe/	30	1.69%
14	/calend.htm	29	1.63%
15	/pubs/id-257.htm -> /images/sea/	27	1.52%
16	/images/photos/development/2004/	23	1.30%
17	/pubs/id-259.htm	23	1.30%
18	/pubs/id-258.htm -> /images/sea/	23	1.30%
19	/images/photos/Aerial/fragmentation.htm	21	1.18%
20	/images/photos/Toursmtg/Porter0176.htm	20	1.13%
21	/ongoing.htm	18	1.01%
22	/pubs/id-256.htm	16	0.90%
23	/images/photos/Aerial/Meijer.htm	16	0.90%

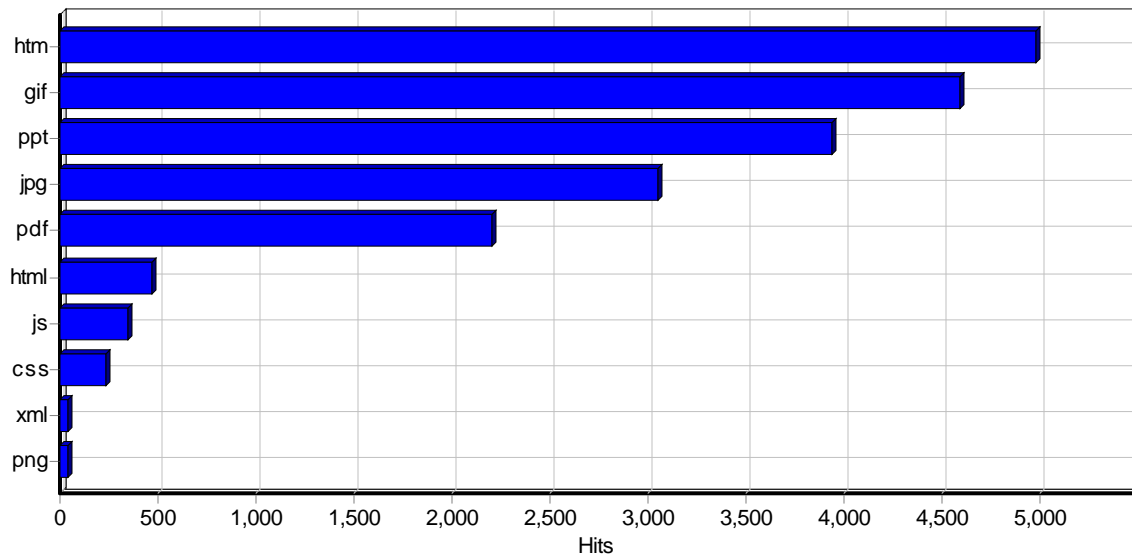
24	/about.htm	15	0.85%
25	/innews.html	15	0.85%
26	/images/photos/PicCat/CT/pages/RiverDredge.htm	15	0.85%
27	/images/photos/Otherphotos/McCormicks.htm	14	0.79%
28	/images/sea/	14	0.79%
29	/images/photos/development/2004hidev-4.html -> /images/photos/development/2004/	13	0.73%
30	/pubs/id-255.htm	12	0.68%
31	/images/photos/Aerial/Meijer&FaithBaptist.htm	12	0.68%
32	/images/photos/Smart/DSC00359.htm	11	0.62%
33	/images/photos/Smart/2004Prairie66.htm	11	0.62%
34	/images/photos/Development/2004/	11	0.62%
35	/images/photos/PicCat/CT/pages/GilletteCastle.htm	10	0.56%
36	/webtrend/DEFAULT.HTM -> /webtrend/DEFAULT_t.HTM -> /webtrend/DEFAULT_01_b.HTM	10	0.56%
37	/images/photos/Aerial/reservoir-3.htm	9	0.51%
38	/pubs/id-257.htm	9	0.51%
39	/images/photos.htm	9	0.51%
40	/pubs/id-259.htm -> /images/sea/	8	0.45%
41	/links.htm	7	0.39%
42	/images/photos/PicCat/CT/pages/kudzo.htm	7	0.39%
43	/ -> /images/sea/ -> /_vti_bin/fpcount.exe/ -> /pubs.htm	7	0.39%
44	/images/photos/Otherphotos/OldBarn.htm	7	0.39%
45	/pubs/id-258.htm	6	0.34%
46	/images/photos/Development/vol_dev.html	6	0.34%
47	/ -> /_vti_bin/fpcount.exe/ -> /images/sea/	6	0.34%
48	/images/photos/PicCat/Coasts/pages/2005/ -> /images/photos/PicCat/Coasts/images/2005/ -> /images/photos/PicCat/Coasts/pages/2005/	6	0.34%
49	/ -> /about.htm -> /calend.htm -> /links.htm -> /ongoing.htm -> /pubs.htm -> / -> /innews.html -> /images/photos.htm -> /slideshow/web.htm -> /pubs/id-255.htm -> /pubs/id-256.htm -> /pubs/id-257.htm -> /pubs/id-258.htm -> /pubs/id-259.htm -> /_vti_bin/fpcount.exe/ -> /images/photos/Aerial/aerial.htm -> /images/photos/Development/coastdev.htm -> /images/photos/Development/smrtgrth.htm -> /images/photos/Otherphotos/other.htm -> /images/photos/PicCat/PhotoIndex.htm -> ...	6	0.34%
50	/innews.html -> /about.htm	6	0.34%
	Subtotal	1,410	79.44%
	Total	1,775	100.00%

File Types

Daily File Type Access



Most Requested File Types



Most Requested File Types

	File Type	Hits	Incomplete Requests	Bandwidth (KB)
1	htm	4,977	26	76,378
2	gif	4,592	1	17,295
3	ppt	3,933	2,410	6,282,291
4	jpg	3,046	52	321,293
5	pdf	2,202	1,690	218,152
6	html	473	1	993
7	js	347	0	4,752
8	css	232	0	268
9	xml	45	0	56
10	png	37	0	3,644
11	dll	15	0	15
12	wmf	6	0	122

	Total	19,905	4,180	6,925,264
--	--------------	---------------	--------------	------------------

Visitors

Hosts

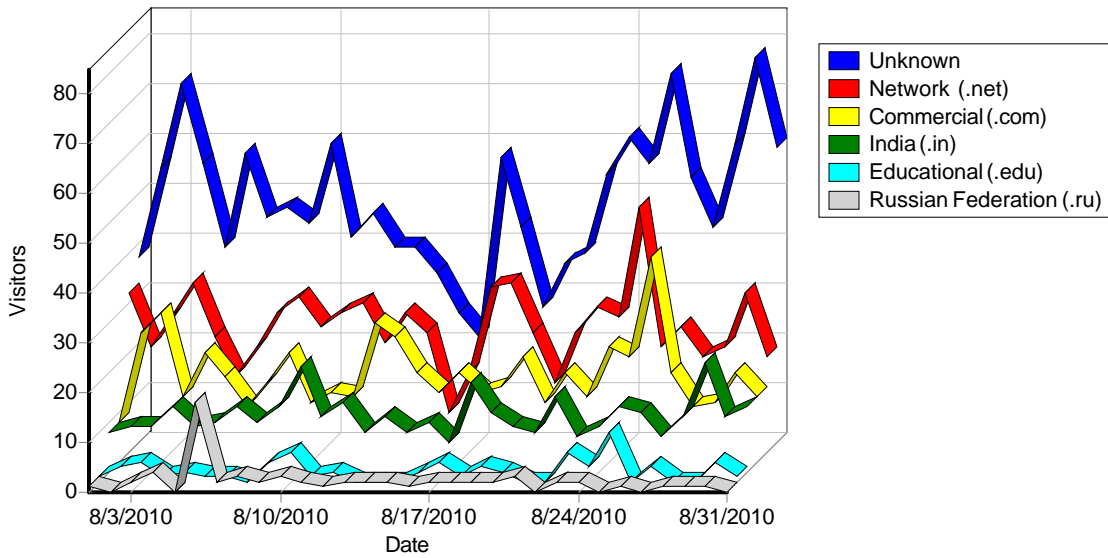
Top Hosts

	Host	Country	Hits	Visitors	Bandwidth (KB)
1	nat.nexstar.tv	Tuvalu	136	55	1,333
2	220.181.94.223	China	35	30	484
3	hk2-lr680223g.super-goo.com	United States	43	24	546
4	216-64-136-212.static.twtelecom.net	United States	18	18	4
5	somehost254.bluecoat.com	United States	18	17	184
6	74.125.74.195	United States	15	15	5,441
7	sticker00.yandex.ru	Russian Federation	78	13	519
8	208.51.23.195	United States	62	13	245
9	91.201.66.71	Russian Federation	12	12	269
10	static-208-80-194-30.as13448.com	United States	10	10	91
11	rg34.riverglassinc.com	United States	21	9	1,662
12	cache-dtc-ad10.proxy.aol.com	United States	8	8	2
13	88.131.106.22	Sweden	17	8	56
14	retail.dynamic.sify.net	United States	37	8	47,567
15	c03.entireweb.com	United States	9	7	22
16	38.111.147.86	United States	9	7	805
17	66.249.85.2	United States	21	6	1,282
18	sticker01.yandex.ru	Russian Federation	92	6	1,910
19	64.71.175.209	Netherlands	6	6	0
20	c07.entireweb.com	United States	7	6	7
21	150.70.64.202	Japan	8	6	8,386
22	64.71.175.126	Netherlands	6	6	0
23	150.70.75.159	Japan	6	6	4,737
24	ip-72-55-156-8.static.privatedns.com	United States	12	6	2,861
25	81.199.200.59.satcom-systems.net	United States	48	5	362
26	c02.entireweb.com	United States	5	5	28
27	hosted-by.altushost.com	United States	11	5	135
28	static-208-80-194-32.as13448.com	United States	5	5	45
29	server.wapka.mobi	United States	9	5	417
30	220-227-4.171.uclix.net	United States	13	5	15,643
31	115.248.116.201	India	10	5	39,702
32	210.212.253.106	India	5	5	23,254
33	risenet.iti.upv.es	Spain	6	5	455
34	c08.entireweb.com	United States	5	4	10
35	196.13.185.253	South Africa	22	4	1,058
36	194.140.232.131	Portugal	4	4	18
37	imparsers15.yandex.ru	Russian Federation	11	4	999
38	s4.dmoz.ixquick.com	Netherlands	4	4	740
39	203.14.52.45	Australia	23	4	2,815
40	fw-80-1.isd.state.in.us	United States	59	4	1,068
41	static-208-80-194-28.as13448.com	United States	4	4	36
42	static-208-80-194-33.as13448.com	United States	4	4	36
43	static-208-80-194-34.as13448.com	United States	4	4	36
44	h-96-235.scoutjet.com	United States	281	4	1,592

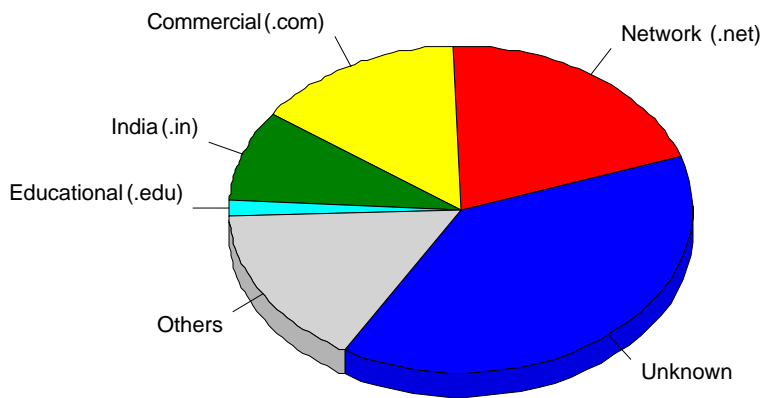
45	209.222.8.187.choopa.net	United States	4	4	671
46	115.240.255.254	India	11	4	11,760
47	74.125.75.3	United States	4	4	7,530
48	72.14.192.4	United States	6	4	952
49	113.22.165.163	Vietnam	13	4	87
50	static-208-80-194-65.as13448.com	United States	6	4	507
Subtotal			1,263	415	188,390
Total			21,593	3,870	6,928,097

Top-Level Domains

Daily Top-Level Domains



Top-Level Domains



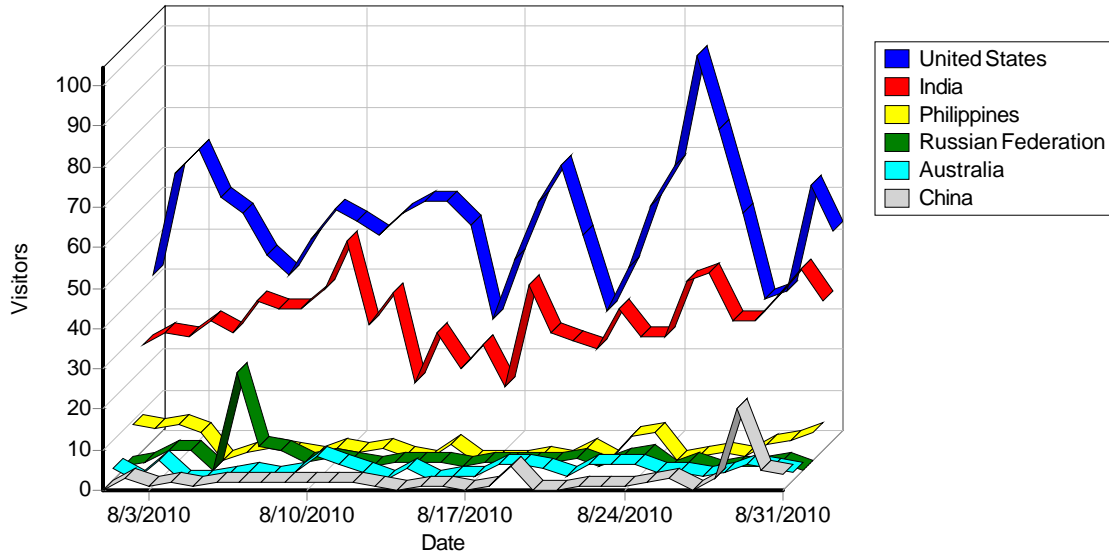
Top-Level Domains

	Domain	Hits	Visitors	% of Total Visitors	Bandwidth (KB)
1	Unknown	6,688	1,497	38.68%	3,922,571
2	Network (.net)	5,942	784	20.26%	574,266

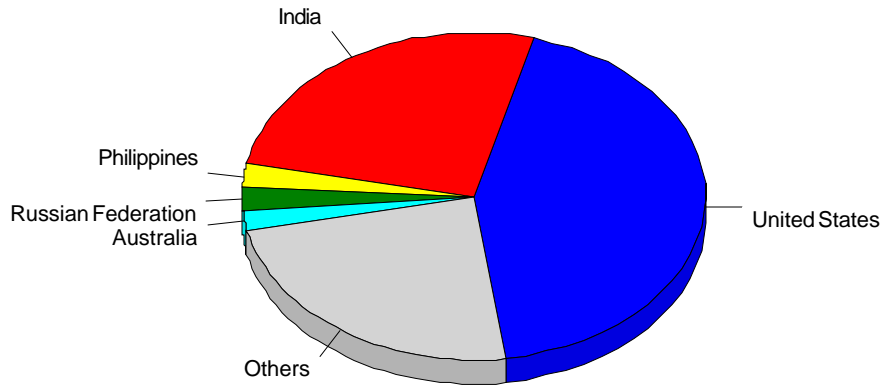
3	Commercial (.com)	2,518	557	14.39%	382,798
4	India (.in)	1,126	350	9.04%	1,548,506
5	Educational (.edu)	650	65	1.68%	71,142
6	Russian Federation (.ru)	223	64	1.65%	5,461
7	Tuvalu (.tv)	137	56	1.45%	1,351
8	Australia (.au)	599	56	1.45%	56,997
9	Singapore (.sg)	80	50	1.29%	12,742
10	Canada (.ca)	142	21	0.54%	20,930
11	Germany (.de)	215	19	0.49%	23,175
12	Thailand (.th)	23	19	0.49%	8,346
13	Portugal (.pt)	21	18	0.47%	1,847
14	South Africa (.za)	139	18	0.47%	2,381
15	Non-profit Organization (.org)	136	15	0.39%	17,738
16	New Zealand (.nz)	94	15	0.39%	3,843
17	United States (.us)	146	15	0.39%	19,502
18	Japan (.jp)	27	14	0.36%	9,653
19	Government (.gov)	169	13	0.34%	6,239
20	Malaysia (.my)	64	11	0.28%	17,460
21	Brazil (.br)	50	11	0.28%	2,641
22	Indonesia (.id)	29	10	0.26%	16,763
23	Philippines (.ph)	34	10	0.26%	8,924
24	Netherlands (.nl)	67	8	0.21%	1,724
25	Italy (.it)	52	7	0.18%	2,480
26	Ukraine (.ua)	341	7	0.18%	1,975
27	Spain (.es)	24	7	0.18%	15,567
28	France (.fr)	54	7	0.18%	3,459
29	Old ARPA-net (.arpa)	38	6	0.16%	8,319
30	Military (.mil)	11	6	0.16%	2,944
31	United Kingdom (.uk)	19	5	0.13%	9,712
32	Mobile (.mobi)	9	5	0.13%	417
33	Sweden (.se)	59	5	0.13%	3,862
34	.local	14	5	0.13%	633
35	Colombia (.co)	32	5	0.13%	603
36	Argentina (.ar)	42	5	0.13%	8,154
37	Turkey (.tr)	16	4	0.10%	922
38	Moldova (.md)	4	4	0.10%	7,699
39	Chile (.cl)	23	4	0.10%	10,800
40	Mexico (.mx)	17	3	0.08%	431
41	Taiwan (.tw)	21	3	0.08%	570
42	Belgium (.be)	38	3	0.08%	407
43	Fiji (.fj)	14	3	0.08%	8,795
44	Pakistan (.pk)	23	3	0.08%	1,062
45	Seychelles (.sc)	6	3	0.08%	32
46	Denmark (.dk)	40	3	0.08%	624
47	Finland (.fi)	10	3	0.08%	578
48	Nepal (.np)	9	3	0.08%	8,084
49	Latvia (.lv)	990	3	0.08%	4,361
50	Hong Kong (.hk)	19	3	0.08%	7,570
	Subtotal	21,244	3,811	98.48%	6,847,091
	Total	21,593	3,870	100.00%	6,928,097

Countries

Daily Countries Activity



Most Active Countries

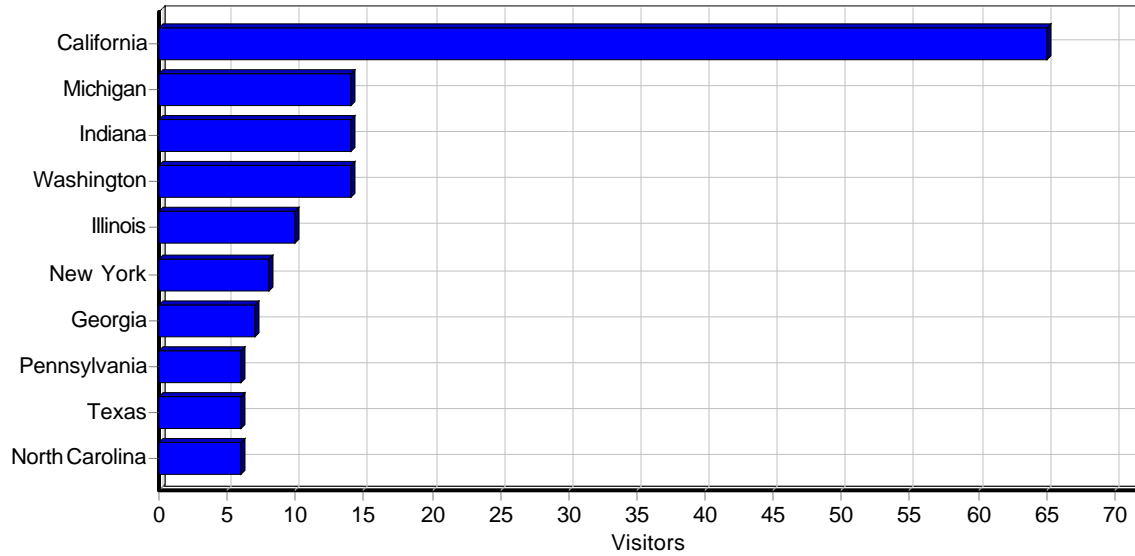


Most Active Countries

	Country	Hits	Visitors	% of Total Visitors	Bandwidth (KB)
1	United States	10,690	1,690	43.67%	1,112,719
2	India	3,627	1,004	25.94%	4,651,441
3	Philippines	414	91	2.35%	112,322
4	Russian Federation	264	88	2.27%	6,092
5	Australia	714	71	1.83%	62,903
6	China	90	71	1.83%	25,076
7	Singapore	103	62	1.60%	21,021
8	Tuvalu	137	56	1.45%	1,351
9	Thailand	75	49	1.27%	32,902
10	Malaysia	229	44	1.14%	78,214
11	South Africa	223	33	0.85%	36,245
12	Korea, Republic of	134	32	0.83%	15,310

13	Canada	171	31	0.80%	21,868
14	Sweden	95	31	0.80%	3,948
15	Netherlands	201	30	0.78%	11,096
16	Japan	50	29	0.75%	23,722
17	Germany	242	27	0.70%	38,408
18	Portugal	31	25	0.65%	1,944
19	Nigeria	108	21	0.54%	10,905
20	Indonesia	477	19	0.49%	85,953
21	Pakistan	162	19	0.49%	74,085
22	New Zealand	129	19	0.49%	4,705
23	United Arab Emirates	73	17	0.44%	92,470
24	United Kingdom	71	17	0.44%	11,960
25	Brazil	51	12	0.31%	2,705
26	France	88	11	0.28%	4,079
27	Vietnam	39	11	0.28%	1,537
28	Sri Lanka	50	10	0.26%	22,795
29	Spain	79	10	0.26%	23,808
30	Unknown	53	10	0.26%	17,482
31	Ethiopia	81	9	0.23%	21,000
32	Bangladesh	30	8	0.21%	20,520
33	Turkey	74	8	0.21%	2,060
34	Colombia	39	8	0.21%	1,438
35	Nepal	17	8	0.21%	17,801
36	Iran	47	8	0.21%	2,317
37	Romania	159	7	0.18%	2,015
38	Ukraine	341	7	0.18%	1,975
39	Italy	52	7	0.18%	2,480
40	Latvia	994	6	0.16%	4,417
41	Argentina	43	6	0.16%	8,223
42	Cambodia	14	5	0.13%	10,878
43	Denmark	61	5	0.13%	713
44	Hong Kong	42	5	0.13%	8,121
45	Moldova	6	5	0.13%	7,710
46	Uganda	27	5	0.13%	9,096
47	Peru	4	4	0.10%	8,188
48	Chile	23	4	0.10%	10,800
49	Yemen	5	4	0.10%	22,701
50	Taiwan	25	4	0.10%	691
	Subtotal	20,954	3,763	97.24%	6,772,236
	Total	21,593	3,870	100.00%	6,928,097

Most Active US States



Most Active US States

	State	Hits	Visitors	Bandwidth (KB)
1	California	191	65	25,049
2	Michigan	54	14	2,511
3	Indiana	132	14	3,818
4	Washington	48	14	8,464
5	Illinois	79	10	1,281
6	New York	30	8	12,273
7	Georgia	61	7	629
8	Pennsylvania	31	6	2,560
9	Texas	36	6	1,048
10	North Carolina	13	6	2,855
11	Maryland	142	5	809
12	Kentucky	19	5	1,605
13	Tennessee	58	5	804
14	Florida	44	5	797
15	Louisiana	21	4	1,165
16	Arizona	35	4	2,038
17	Armed Forces Europe, Middle East, & Canada	21	4	9,785
18	Wisconsin	11	3	2,033
19	Ohio	24	3	265
20	Kansas	5	3	1,897
21	New Jersey	5	3	439
22	Connecticut	63	3	725
23	Virginia	4	3	241
24	Idaho	12	2	65
25	New Mexico	4	2	21
26	District of Columbia	4	2	447
27	Oregon	12	1	136
28	South Dakota	2	1	152
29	South Carolina	3	1	541

30	Massachusetts	8	1	59
31	Minnesota	15	1	48
32	Colorado	5	1	257
33	Hawaii	2	1	253
34	Missouri	3	1	142
35	New Hampshire	2	1	152
36	Oklahoma	2	1	0
37	Montana	1	1	7,530
38	Nebraska	2	1	70
	Total	1,204	218	92,984

Cities

Most Active Cities

	City	Hits	Visitors	Bandwidth (KB)
1	Mumbai, India	248	87	403,809
2	New Delhi, India	269	82	401,105
3	Beijing, China	45	38	8,294
4	Mountain View, California, United States	45	37	17,260
5	Hyderabad, India	138	36	196,023
6	Bangalore, India	41	27	96,433
7	Östersund, Sweden	36	26	85
8	Pune, India	43	23	112,646
9	Madras, India	81	23	148,431
10	Seoul, Korea, Republic of	62	21	14,493
11	Delhi, India	62	18	67,398
12	Quezon City, Philippines	68	18	7,028
13	Bangkok, Thailand	34	18	22,407
14	Jinan, China	28	18	616
15	Makati, Philippines	93	16	24,810
16	Calcutta, India	209	16	66,321
17	Haarlem, Netherlands	16	16	740
18	Saint Petersburg, Russian Federation	13	13	287
19	Islamabad, Pakistan	122	13	71,306
20	Lagos, Nigeria	32	13	5,166
21	Kuala Lumpur, Malaysia	79	13	26,336
22	Jaipur, India	33	12	66,839
23	Coimbatore, India	45	12	72,282
24	Chandigarh, India	30	12	45,299
25	Singapore, Singapore	22	11	747
26	Ghaziabad, India	19	10	42,903
27	Dubai, United Arab Emirates	43	9	51,983
28	Cagayan De Oro, Philippines	52	9	12,648
29	Romeo, Michigan, United States	24	9	1,552
30	Surat, India	19	8	33,260
31	Malolos, Philippines	13	7	135
32	Abu Dhabi, United Arab Emirates	24	7	39,944
33	Dhaka, Bangladesh	29	7	12,989
34	Redmond, Washington, United States	9	7	7,986

35	Cupertino, California, United States	7	7	5,242
36	Ahmadabad, India	9	7	22,930
37	Velluru, India	70	7	40,076
38	Erode, India	18	6	17,302
39	Kathmandu, Nepal	10	6	17,247
40	Nasik, India	15	6	41,198
41	Vadodara, India	12	6	27,418
42	Kottayam, India	36	6	35,596
43	Sydney, Australia	38	6	1,017
44	Los Angeles, California, United States	15	6	1,110
45	Indore, India	10	6	30,528
46	Thana, India	22	6	37,695
47	Ludhiana, India	46	5	23,482
48	London, United Kingdom	5	5	11
49	Lisbon, Portugal	5	5	20
50	Gurgaon, India	10	5	5,661
	Subtotal	2,454	787	2,386,120
	Total	6,205	1,374	3,750,777

Organizations

Most Active Organizations

	Organization	Country	Hits	Visitors	Bandwidth (KB)
1	NIB (National Internet Backbone)	India	1,165	289	1,464,534
2	RELIANCE COMMUNICATIONS	India	288	105	477,156
3	Google	United States	72	49	18,941
4	Smart Broadband Incorporated	Philippines	163	41	40,764
5	National Internet Backbone	India	83	36	199,688
6	CHINANET Beijing Province Network	China	36	31	494
7	Wordlight.com AB	Sweden	36	26	85
8	Mahanagar Telephone Nigam Ltd.	India	92	21	92,842
9	Globe Telecoms	Philippines	139	20	11,480
10	Hathway IP Over Cable Internet Access Service	India	47	19	83,682
11	China Unicom Shandong province network	China	28	18	616
12	Surfboard	Netherlands	16	16	740
13	Emirates Telecommunications Corporation	United Arab Emirates	50	14	62,339
14	Tata Teleservices Maharashtra Ltd	India	62	13	60,368
15	PTCL Triple Play Project	Pakistan	121	13	71,294
16	Global Crossing	United States	62	13	245
17	TREND MICRO INCORPORATED	Japan	14	12	13,123
18	DonEkoService Ltd	Russian Federation	12	12	269
19	Telekom Malaysia Berhad	Malaysia	51	11	24,383
20	Performance Systems International	United States	15	10	820
21	Dishnet Wireless Limited	India	94	10	22,508
22	Korea Telecom	Korea, Republic of	10	9	7,763
23	MTN Nigeria	Nigeria	28	9	3,001
24	Microsoft Corp	United States	11	8	426
25	TREND MICRO INCORPORATED	United States	7	7	5,242
26	ERNET India	India	10	7	26,890

27	MICROSOFT CORPORATION	United States	9	7	7,986
28	Level 3 Communications	United States	11	6	2,401
29	BCL West	India	7	6	7,787
30	Globe Telecom/Innove Communication	Philippines	24	6	15,608
31	Providing broadband to hotels	Singapore	13	6	417
32	ChinaNet Guangdong Province Network	China	6	6	464
33	Celcom Internet Service Provider	Malaysia	34	6	17,153
34	Tikona Digital Networks Pvt. Ltd.	India	14	6	30,691
35	Vainavi Industries Ltd	India	31	5	27,258
36	University of Venda	South Africa	23	5	8,588
37	Turk Telekom	Turkey	59	5	1,518
38	Chandigarh	India	36	5	31,140
39	Bharti Broadband	India	10	5	18,924
40	DigitelOne	Philippines	28	5	16,947
41	Maxnet, Internet Service Provider, Bangkok	Thailand	6	5	476
42	FPT Telecom	Vietnam	19	5	395
43	Ethiopian Telecommunication corporation	Ethiopia	71	5	19,475
44	Excell Media Pvt Ltd	India	6	5	15,829
45	Periar Maniammai College of Tech for Women,Vallam	India	5	5	23,254
46	Sri Lanka Telecom	Sri Lanka	32	5	3,299
47	China Unicom Beijing Province Network	China	4	4	256
48	Bis	United Kingdom	4	4	9
49	Ethiopian Telecommuncation Corporation	United States	21	4	9,785
50	HFCL INFOTEL LTD	India	5	4	15,446
	Subtotal		3,190	944	2,964,825
	Total		7,047	1,547	3,990,214

Referrers

Referring Sites

Top Referring Sites

	Site	Visitors
1	No Referrer	3,870
	Total	3,870

Referring URLs

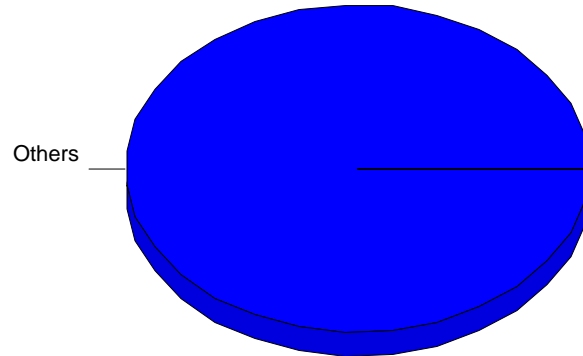
Top Referring URLs

	URL	Visitors
1	No Referrer	3,870
	Total	3,870

Browsers

Browsers

Most Used Browsers

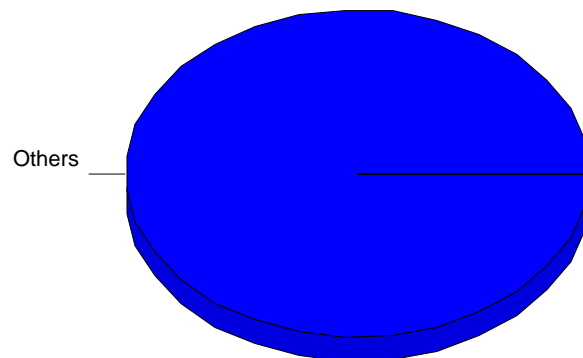


Most Used Browsers

	Browser	Hits	Visitors	% of Total Visitors
1	Others	21,593	3,870	100.00%
	Total	21,593	3,870	100.00%

Operating Systems

Most Used Operating Systems



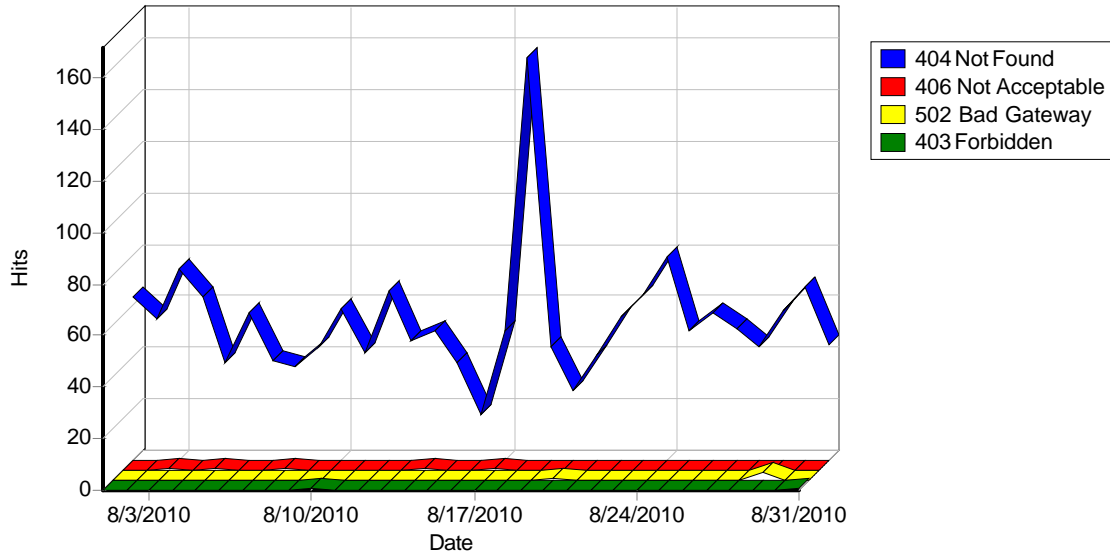
Most Used Operating Systems

	Operating System	Hits	Visitors	% of Total Visitors
1	Others	21,593	3,870	100.00%
	Total	21,593	3,870	100.00%

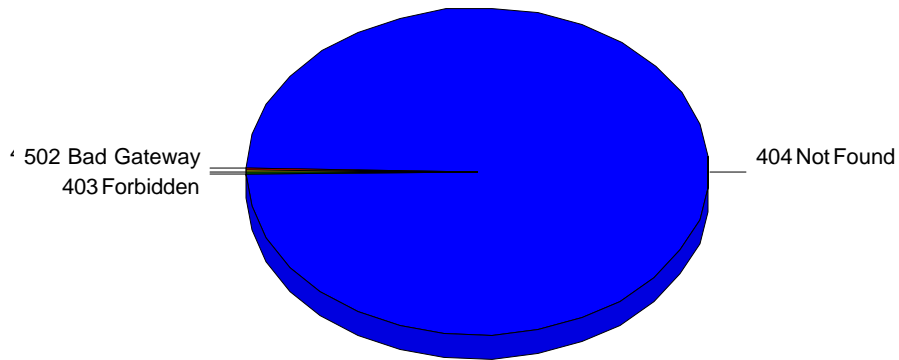
Errors

Types

Daily Error Types



Error Types



Error Types

	Error	Hits
1	404 Not Found	1,677
2	406 Not Acceptable	5
3	502 Bad Gateway	4
4	403 Forbidden	2
	Total	1,688

404 Errors

404 (Page Not Found) Errors

	Request / Referrer	Hits
1	/favicon.ico No Referrer	1,264
2	/robots.txt No Referrer	217
3	/Rejected-By-UrlScan/ No Referrer	83
4	/images/photos/Development/2004/ No Referrer	10
5	/slideshow/web_files/editdata.mso No Referrer	7
6	/images/photos/Otherphotos/Wabash-E 1995.html No Referrer	7
7	/images/photos/Otherphotos/Wabash-E 1996.html No Referrer	6
8	/images/photos/PicCat/CT/pages/_CTriver.htm No Referrer	6
9	/slideshow/web_files/oledata.mso No Referrer	6
10	/images/photos/Land/ No Referrer	6
11	/pubs/FNR256.pdf.(accessed No Referrer	4
12	/images/photos/PicCat/Coasts/images/2005/ No Referrer	4
13	/plugins/editors/tinymce/jscripts/tiny_mce/plugins/tinybrowser/tinybrowser.php No Referrer	3
14	/images/sea/ No Referrer	3
15	/images/photos/PicCat/Coasts/pages/2005/ No Referrer	3
16	/images/photos/Aerial/26E&Faith.jpg No Referrer	3
17	/images/photos/2004/ No Referrer	3
18	/images/backg.gif No Referrer	3
19	/contact.php No Referrer	2
20	_vti_bin/owssvr.dll No Referrer	2
21	/images/okd/fellow/ No Referrer	2
22	/links.htm__ No Referrer	2
23	/images/photos/Toursmtg/cornfield/ No Referrer	2
24	/images/okd/aboutus/ No Referrer	2
25	/images/okd/links/ No Referrer	2
26	/webtrend/contact.php No Referrer	2
27	/phpmyadmin/scripts/setup.php No Referrer	1
28	/webtrend/pwp.pdf/contact.php No Referrer	1
29	/labels.rdf No Referrer	1
30	/webtrend/pwp.pdf No Referrer	1
31	/webtrend/Default.htmDEFAULT_01_b.HTM No Referrer	1

32	/DM/phase3/phase1/lulc.htm No Referrer	1
33	/slideshow/web/ No Referrer	1
34	/webtrend/Default.htmDEFAULT_t.HTM No Referrer	1
35	/dynAnimation() No Referrer	1
36	/images/photos/PicCat/Coasts/index.htmThumbnailFrame.htm No Referrer	1
37	/images/photos/PicCat/Coasts/index.htmimages/2004/ No Referrer	1
38	/images/photos/PikeCounty/pages/preloadImages();/ No Referrer	1
39	/images/photos/PicCat/Coasts/images/2004/ No Referrer	1
40	/images/photos/Aerial/Meijer&FaithBaptist.jpg No Referrer	1
41	/images/photos/Otherphotos/600S/ No Referrer	1
42	/images/photos/Aerial/Meijer&FaithBaptist.jpg No Referrer	1
43	/images/photos/Toursmtg/2005Prairie66_small.jpg No Referrer	1
44	/images/photos/Toursmtg/2005Prairie68_small.jpg No Referrer	1
45	/images/photos/TryonFarms2008/pages/preloadImages();/ No Referrer	1
46	/images/photos/Toursmtg/2005Prairie45_small.jpg No Referrer	1
47	/images/photos/Toursmtg/2004Praire48_small.JPG No Referrer	1
48	/images/photos/Toursmtg/2004Praire59_small.JPG No Referrer	1
49	/images/photos/Toursmtg/2004Prairie25_small.JPG No Referrer	1
	Total	1,677

Other Errors

Other Errors

	Error	Request / Referrer	Hits
1	502 Bad Gateway	/_vti_bin/fpcount.exe/ No Referrer	3
2	406 Not Acceptable	/ No Referrer	2
3	403 Forbidden	/_vti_bin/owssvr.dll No Referrer	2
4	502 Bad Gateway	/_vti_bin/fpcount.exe No Referrer	1
5	406 Not Acceptable	/pubs/id_257.pdf No Referrer	1
6	406 Not Acceptable	/images/photos/PicCat/CT/images/GilletteCastle.jpg No Referrer	1
7	406 Not Acceptable	/pubs/FNR257.pdf No Referrer	1
	Total		11